

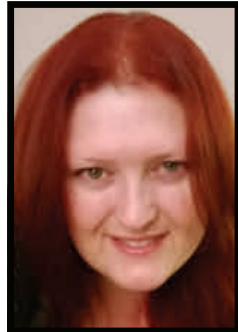
**Parent Carer  
Participation Team  
Management and Support**



**Gethyn Williams**  
Director of development and  
engagement  
gethyn.williams@contact.org.uk



**Gail Walshe**  
Head of parent carer  
participation  
gail.walshe@contact.org.uk  
01296 713138/07817 317371



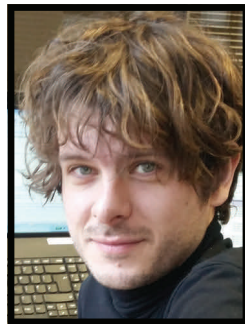
**Carolyn Deveney**  
Operations Manager  
carolyn.deveney@contact.org.uk  
07905 917066



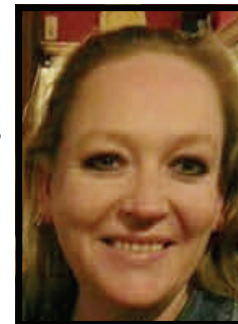
**Sarah Lee**  
Operations lead and parent  
carer participation adviser  
*North East*  
sarah.lee@contact.org.uk  
01289 387089 / 07920 654967



**Lynn Hoppenbrouwers**  
Strategic health lead  
lynn.hoppenbrouwers@contact.org.uk  
020 7608 8700 / 07962 200669



**Ben Bennett**  
Grants programme officer  
ben.bennett@contact.org.uk  
020 7608 8744



**Helen Reid**  
Programme officer  
helen.reid@contact.org.uk  
07738 895007



**Sarah Gallimore**  
NNPCF programme officer  
sarah.gallimore@contact.org.uk  
020 7608 8708



**Rachel King**  
Grants administrator  
rachel.king@contact.org.uk  
020 7608 8783



**Anapal Rehal**  
Programme administrator  
anapal.rehal@contact.org.uk  
020 7608 8784

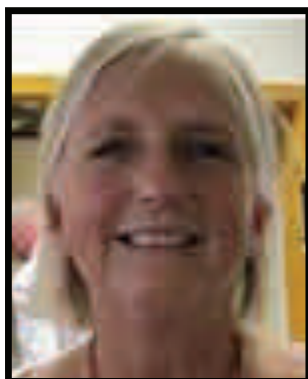
# Parent Carer Participation Team Regional Advisors



**Catherine Wood**  
Parent carer participation  
advisor  
*East and West Midlands*  
catherine.wood@contact.org.uk  
07920 654960



**Heather Tarbuck**  
Parent carer participation  
advisor  
*London North East and London South*  
heather.tarbuck@contact.org.uk  
020 7326 4522 / 07920 655165



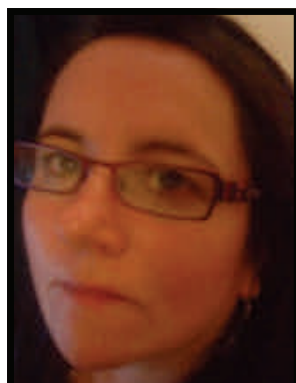
**Miranda Parrott**  
Parent carer participation  
advisor  
*London North West*  
miranda.parrott@contact.org.uk  
07539 540461



**Sue Mennear**  
Parent carer participation  
advisor  
*South West and Berkshire*  
sue.mennear@contact.org.uk  
0117 9651782



**Laura Burling**  
Parent carer participation  
advisor  
*Yorkshire and Humber, Bury,  
Cheshire East, Lancashire,  
Manchester, Oldham, Rochdale,  
Salford, Trafford*  
laura.burling@contact.org.uk  
01625 537342 / 07920 655079



**Julie Singleton**  
Parent carer participation  
advisor  
*East of England, South East and  
Southwark*  
julie.singleton@contact.org.uk  
07910 795960



**Kate Hurn**  
Parent carer participation advisor  
*Blackburn with Darwen, Blackpool, Bolton, Cheshire West  
and Chester, Halton, Knowsley, Liverpool, Sefton, St  
Helens, Stockport, Tameside, Warrington, Wigan, Wirral*  
kate.hurn@contact.org.uk  
07458 045694

Registered Charity No. 284912  
Charity registered in Scotland  
No. SC039169 Company limited  
by guarantee, registered in  
England and Wales No. 1633333  
VAT Registration Number  
GB 749 3846 82

