

# NHS England SEND Leads

**Who are they and what do they do?**

**NNPCF Annual National Conference of Parent  
Carer Forums**

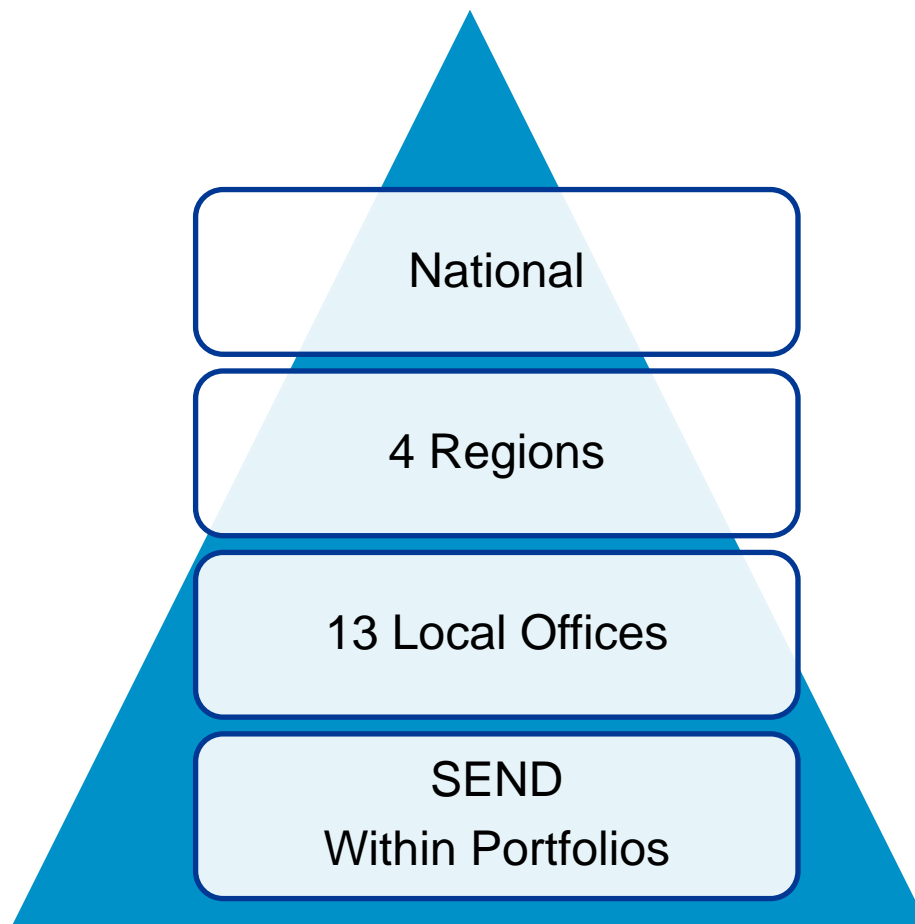
**Lorraine Mulroney  
Senior Children and Young  
People Nurse  
Special Educational Need  
and Disability (SEND)  
Programme Lead (NHS  
England)**

**Lisa Cooper  
North Regional Lead  
Deputy Director Quality  
& Safeguarding**



28 November 2017

# How do we work?



## What are we working on?

### Assurance Improvement

- CCG
- Self Assessment

### Engagement

- LA Network Meetings
- Regional local Parent Carer Forums (PCF)

### Key Work

- Inspection Outcomes
- Working with Department for Education (DfE) Advisors

# North Region- Who is who?

Name	SEND LEAD Area	Job Role/Title	Email
Lisa Cooper	North Regional Lead	Deputy Director Quality & Safeguarding	<a href="mailto:Lisa.cooper16@nhs.net">Lisa.cooper16@nhs.net</a>
Christine Brown	NHS England Cumbria & North East Lead	Deputy Director Quality Assurance	<a href="mailto:christine.brown11@nhs.net">christine.brown11@nhs.net</a>
Wendy Barker	NHS England Yorkshire & Humber Lead	Deputy Director Nursing	<a href="mailto:wendy.barker5@nhs.net">wendy.barker5@nhs.net</a>
Alison Cole	NHS England Lancashire & South Cumbria Lead	Deputy Director Nursing	<a href="mailto:alison.cole5@nhs.net">alison.cole5@nhs.net</a>
Christine Griffith-Evans	NHS England Cheshire & Merseyside Lead	Deputy Director Nursing	<a href="mailto:christine.griffith-evans@nhs.net">christine.griffith-evans@nhs.net</a>
Mandy Low	Greater Manchester Health & Social Care Partnership	Acting Head of Nursing	<a href="mailto:mandy.low@nhs.net">mandy.low@nhs.net</a>

# Midlands and East Region- Who is who?

Name	SEND LEAD Area	Job Role/Title	Email
Patrick Nyarumbu	Midlands and East Regional Lead	Deputy Director of Nursing	patrick.nyarumbu@nhs.net
Mavis Spencer	East of England (East) Local Lead	Deputy Director of Nursing and Quality	mavisspencer@nhs.net
Helen Hipkiss	North Midlands Local Lead	Deputy Director of Quality Shropshire / Staffordshire	helen.hipkiss@nhs.net
Debbie King	West Midlands Local Lead	Assistant Head of Nursing	Debbie.king@nhs.net
Martin Fahy	Central Midlands Local Lead	Deputy Director or Nursing	m.fahy@nhs.net
Shaney-Ann Charles		Head of Quality	Shaney-ann.charles@nhs.net

# South Region- Who is who?

Name	SEND LEAD Area	Job Role/Title	Email
Hazel Watson	South Regional Lead	Deputy Director of Nursing	hazel.watson1@nhs.net
Juliet Glanfield	South East Local Lead	Lead for Quality	juliet.glanfield@nhs.net
Paul Spencer	South West Local Lead	Patient Experience Manager	paul.spencer1@nhs.net
Costin Matei	Wessex Local Lead	Patient Experience and Safeguarding Manager	cmatei@nhs.net
Helen Crystal Tania Atcheson	South Central Local Leads	Safeguarding and Patient Experience Manager Quality and Safety Manager	helen.chrystal@nhs.net Tania.atcheson@nhs.net

# London Region- Who is who?

Name	SEND LEAD Area	Job Role/Title	Email
TBC	London	TBC	TBC

# Thank you & keep in touch

**Lorraine Mulroney**

**Twitter: @mulron1**

**E-mail: [lorrainemulroney@nhs.net](mailto:lorrainemulroney@nhs.net)**

**Lisa Cooper**

**Twitter: @LCooper102**

**E-mail: [Lisa.Cooper16@nhs.net](mailto:Lisa.Cooper16@nhs.net)**