

contact *For families  
with disabled children*



**National Network of Parent Carer Forums**

**'Our Strength Is Our Shared Experience'**

contact *For families  
with disabled children*



# Welcome

Welcome to this Contact Webinar

If there is a technical hitch, please do bear with us

Those of you joining by pc, laptop, tablet or smart phone should now be able to see this introduction slide



# Timings and Questions

As there are so many attendees, it is not practical for verbal questions to be taken, therefore you will all remain 'muted' throughout

If at any point you have questions, please use the question icon on your GoToWebinar tool bar on your screen

- This will allow you to type your question in to the text box and submit this to the Webinar administrator
- I will select as many relevant questions to answer as time allows, if similar questions are received I will condense these where possible



## Q & A

- Further relevant questions, not covered in the time allowed, will be answered and posted on the Contact website along with the recording of this Webinar, details of which will be circulated next week
- At the end of the Webinar a short questionnaire will launch, please take the time to complete this as this will assist with future online training events





**National Network of Parent Carer Forums**

**'Our Strength Is Our Shared Experience'**

# The NHS Long Term Plan

An NNPCF briefing for parent carer forums

Mrunal Sisodia, East of England Steering Group Member and NNPCF Co-chair

# Overview

- ▶ What is the Long Term Plan?
- ▶ What does the LTP say about children and young people with SEND?
- ▶ How is the LTP being implemented?
  - ▶ Nationally
  - ▶ Regionally
  - ▶ Locally
- ▶ What should parent carer forums do?

# Key documents



## The NHS Long Term Plan



<https://www.longtermplan.nhs.uk/publication/nhs-long-term-plan/>

Ref LTP 1.1



## The NHS Long Term Plan Implementation Framework

<https://www.longtermplan.nhs.uk/publication/implementation-framework/>

Ref IF 1.1

What is the Long Term Plan?





## The background the Long Term Plan

- ▶ In Summer 2018, to mark the 70<sup>th</sup> anniversary of the NHS in July, the Prime Minister (Theresa May) announced an extra £20 billion of funding between now and 2023.
- ▶ In return, she asked the NHS to develop a new 10 year plan for health provision.
- ▶ The Long Term Plan (LTP) follows on from the Five Year Forward View (2015).

The plan recognises three “realities” about the NHS

- ▶ Pride in the NHS’s enduring success
- ▶ Concern about funding, staff, increasing inequalities and population pressures
- ▶ Optimism about the possibilities for better outcomes

# The key principles and changes (LTP 1.22)

1. Boost out of hospital care - “dissolve the...divide between primary and community health services”
2. Reduce pressure on emergency health services
3. More personalised care
4. Digitally enabled primary and out-patient care
5. Local NHS organisations will increasingly focus on population health through integrated care systems (ICSs)

*The focus is likely to be older people - make sure that CYP aren't forgotten.*

*PCFs know all about the theory of personalised care - and it shouldn't just be NHS services*

What does the LTP say about Children  
and Young People with SEND?



# Overarching Principles

1. Put children and young people and their families at the centre of care
2. Value our staff, and support them to work on a multi-professional basis and across boundaries
3. Draw on the latest evidence and build the evidence base where it needs developing
4. Local systems are the agents for change, enabled by national and regional support
5. Involve children, young people and families in the design and delivery of our work
6. Target action at reducing health inequalities, including addressing the needs of vulnerable children and those with complex needs

# Stronger NHS action on health inequalities

- ▶ Extension of physical health checks to people with severe mental illnesses (LTP 2.30)
- ▶ More to ensure that people with learning disability, autism or both can live happier, healthier, longer lives (LTP 2.31)
  - ▶ Timely support for CYP and their families
  - ▶ Proactive care in the community
  - ▶ Reasonable adjustments so that wider NHS services can support, listen to and help
  - ▶ Eyesight, hearing and dental services will meet need
  - ▶ Care in the community for those with complex needs
  - ▶ Accelerate the LeDer initiative
- ▶ Continue to identify and support carers, particularly from vulnerable communities (LTP 2.33)
- ▶ Continue to commission, partner with and champion local charities, social enterprises and CICs providing services and support to vulnerable and at risk groups (LTP 2.37)

*Ask what is being done locally and insist that they coproduce it.*

*Make sure this covers CYP, not just old people*

*PCFs are included in this.*

# Children and Young People's mental health services

- ▶ Increased funding for CYP mental health services (LTP 3.24)
- ▶ Expanded access to community based mental health teams (LTP 3.25) including:
  - ▶ Boost investment in eating disorders (LTP 3.26)
  - ▶ Expanding CYP mental health crisis teams to prevent A&E and hospital admission (LTP 3.27)
  - ▶ School or college based mental health support teams (LTP 3.28)
  - ▶ New services for children with complex needs in selected areas (LTP 3.29)
- ▶ Expanding CYP mental health crisis teams to prevent A&E and hospital admission (LTP 3.27)
- ▶ Extending services to cover 18-25 to support transition to adult services including (LTP 3.30)

*Ask what is being done locally and insist that they coproduce it.*

*More information here*  
<https://www.annafreud.org/what-we-do/schools-in-mind/our-work-with-schools/the-link-programme/>

*Follows the theory of the Children and Families Act*

# Learning Disability and Autism or both (LD+A)

- ▶ Work to address the causes of preventable deaths (LTP 3.31)
  - ▶ Improve uptake of annual health checks (target 75%)
  - ▶ Greater focus on avoiding over-medication and ensuring appropriate treatment for paediatrics (STOMP-STAMP)
- ▶ Improve understanding of the needs of people with LD+A (LTP 3.32)
  - ▶ Greater awareness and training for staff
  - ▶ Local systems (STPs and ICSs) will be responsible for ensuring reasonable adjustments are made
  - ▶ Digital flag on patient records to identify those with LD+A
- ▶ Reduce waiting times for specialist services (LTP 3.33)
  - ▶ More timely diagnosis
  - ▶ Work with social care, schools and “expert charities” to develop packages to support CYP with autism and neurodevelopmental disorders (inc ADHD)
  - ▶ Keyworker support for CYP with LD+A complex needs by 2023/24
- ▶ Continuing to move people out of inpatient care to community care (LTP 3.34) increasing personal health budgets
- ▶ Strengthening Care Education and Treatment Reviews (CETRs)

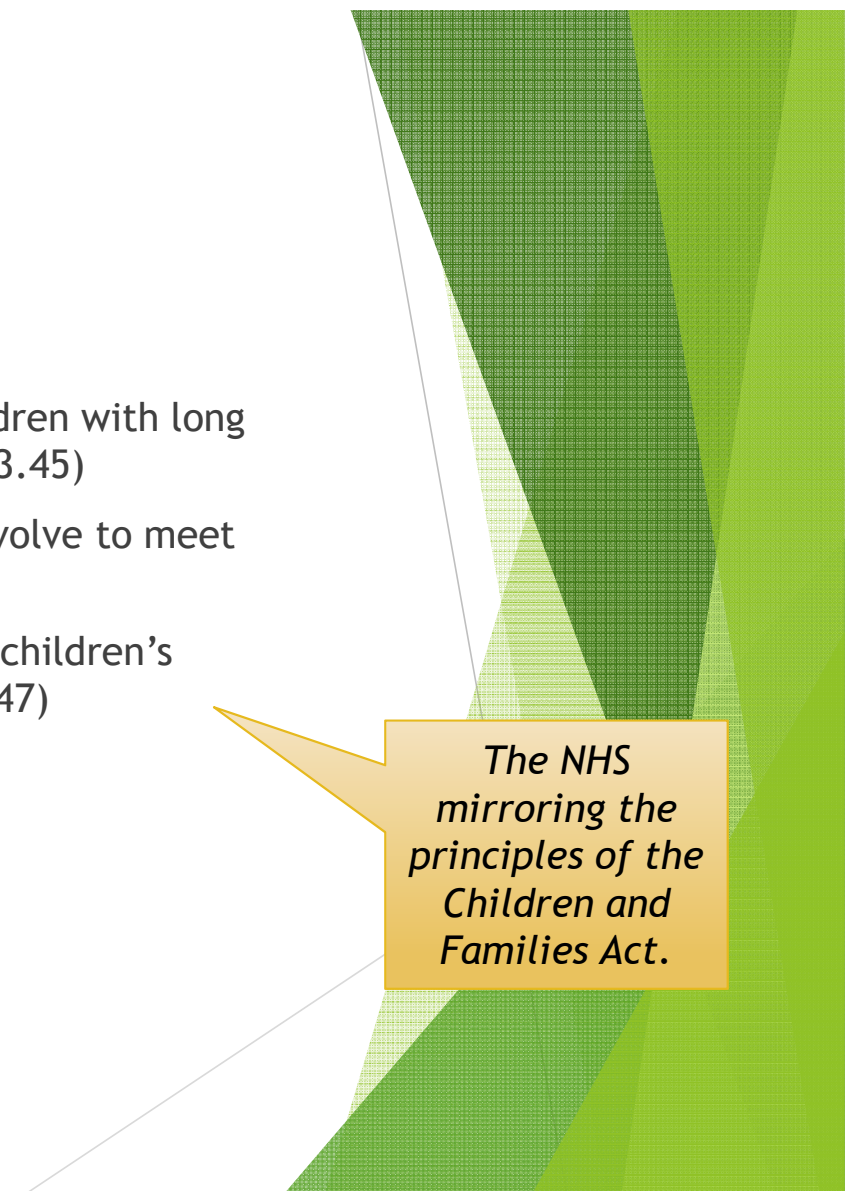
*Check your local system is monitoring this*

*The NHS mirroring the principles of the Children and Families Act.*

*Make sure all of this is co-produced*

## A few more things...

- ▶ Roll out clinical networks to improve quality of care for children with long term conditions such as asthma, epilepsy and diabetes (LTP 3.45)
- ▶ Paediatric critical care networks and surgical services will evolve to meet changing needs (LTP 3.47)
- ▶ Selectively move towards a “0-25 years” service to improve children’s experience of care, outcomes and continuity of care (LTP 3.47)



*The NHS  
mirroring the  
principles of the  
Children and  
Families Act.*

# How is the Long Term Plan being implemented?

The national, regional and local picture



## How will the CYP programme achieve this?

“We will create a Children and Young People’s Transformation Programme which will, in conjunction with the Maternity Transformation Programme, oversee the delivery of the children and young people’s commitments in this Plan”

- Manage delivery of the CYP commitments within the Long-term plan.
- Support local health economies and networks to implement the vision for the future of children services.
- Ensure alignment of children’s health policy across the NHS Arm Length Bodies and Government and bring delivery partners together.
- Ensure information flows in both directions across national, regional and local level

**National:**  
Leadership and  
direction

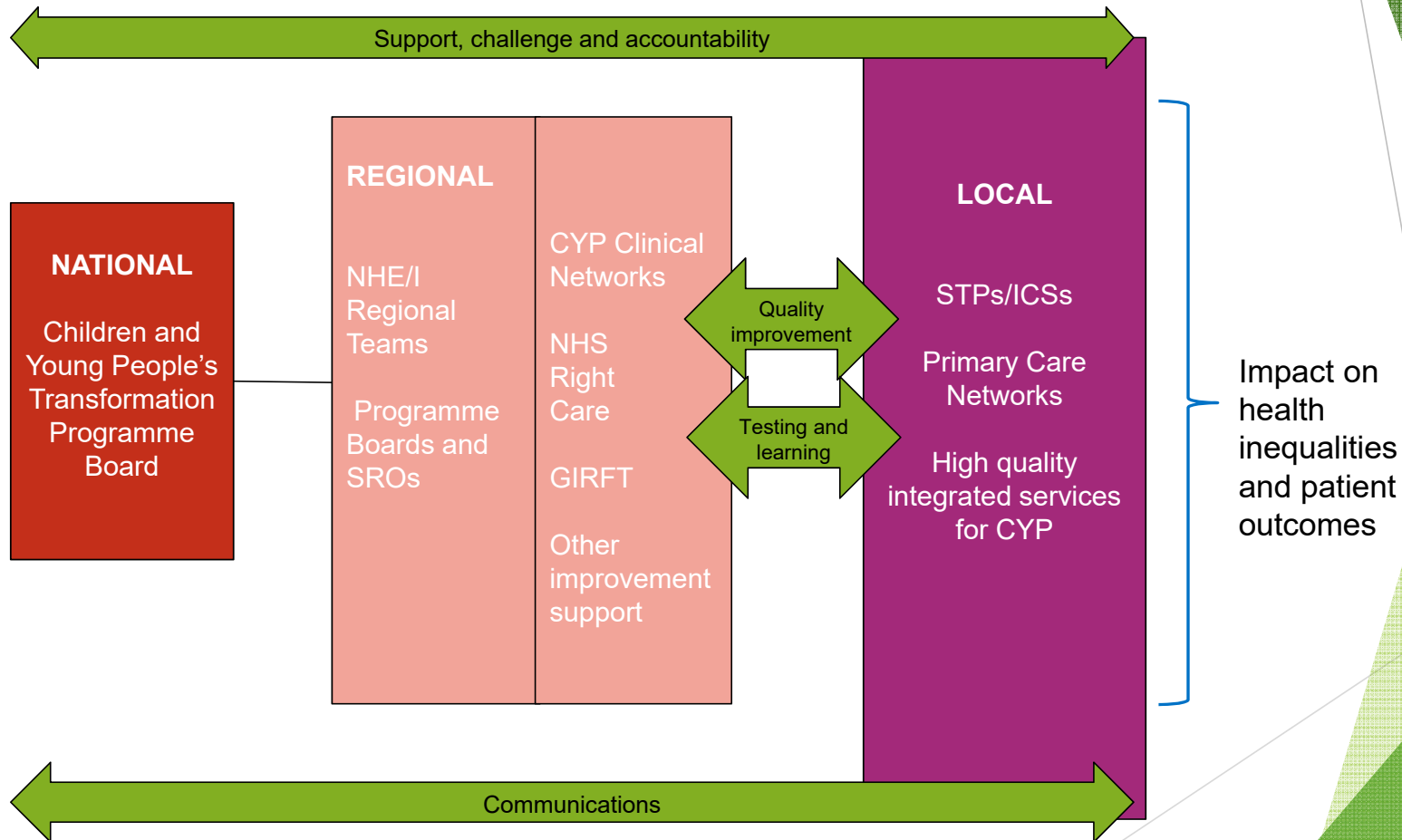


**Regional:**  
Implementation &  
coordination

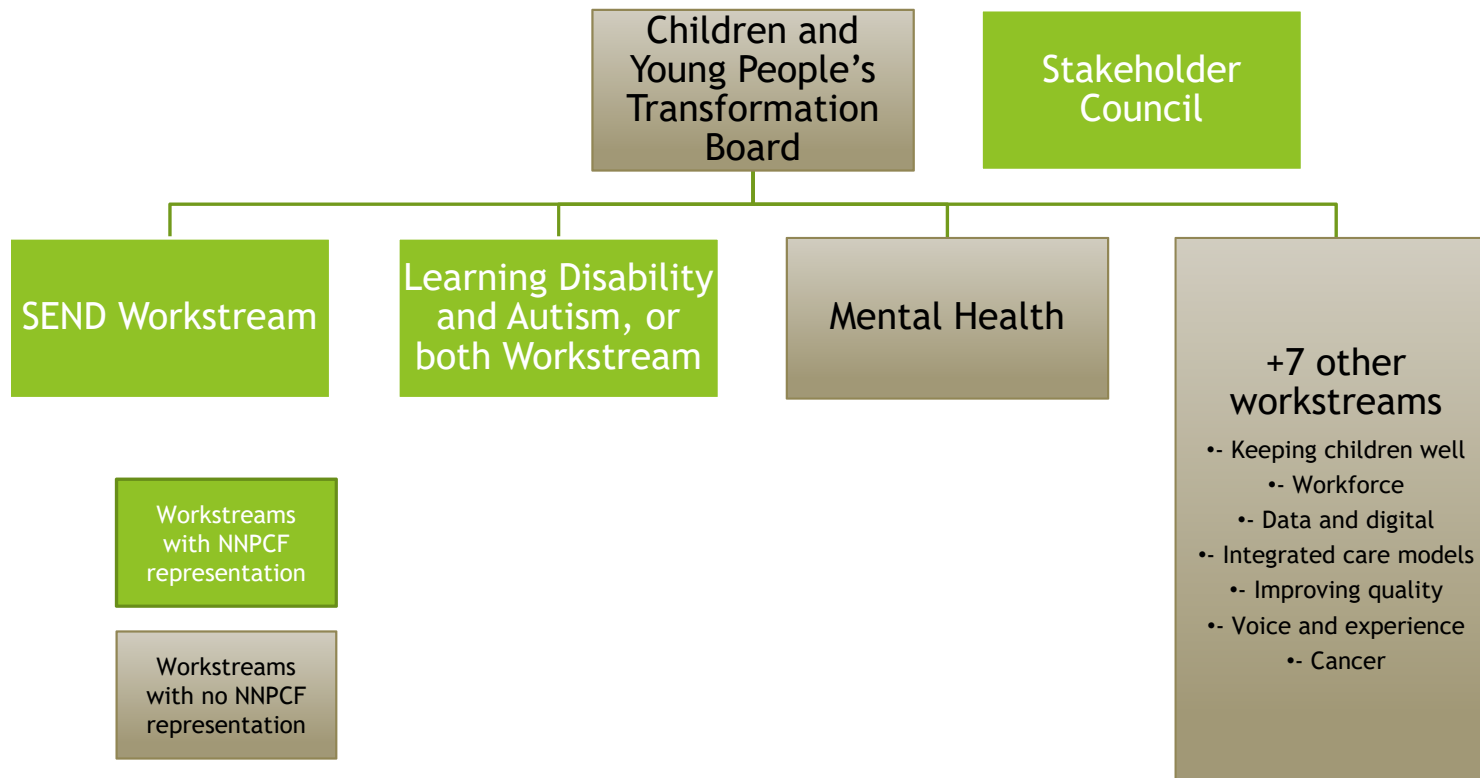


**Local:**  
Design and delivery

## National programme, supporting local transformation



# National governance and oversight



# The regions

- ▶ NHS England is divided into seven regions (compared to the nine Department for Education regions)
- ▶ The regions are a key driver for implementing the NHS LTP
- ▶ A lot of the implementation support will be regionally based
- ▶ Regions will have some discretion to set their own priorities and have money to spend to support these

*Engage with your  
NHSE region  
through your  
NNPCF region to  
get involved  
with this  
activity.*

# The local picture

- ▶ There are 191 *Clinical Commissioning Groups* (CCGs) in England (April 2019)
- ▶ These CCGs are grouped into *Sustainability and Transformation Partnerships* (STPs).
- ▶ STPs are changing into *Integrated Care Systems* (ICS) by April 2021
- ▶ The STPs / ICSs are drawing up plans to set out how they will implement the LTP

*Make sure you are involved in creating these plans.*

“STPs were created to bring local health and care leaders together to plan around the long-term needs of local communities. They have been making simple, practical improvements like making it easier to see a GP, speeding up cancer diagnosis and offering help faster to people with mental ill health.”

*Ask how the set up of your ICS is going?*

“An integrated care system is an even closer collaboration with NHS organisations, in partnership with local councils and others, taking collective responsibility for managing resources, delivering NHS standards, and improving the health of the population they serve. Local services can provide better and more joined-up care when different organisations work together in this way. For staff, improved collaboration can help to make it easier to work with colleagues from other organisations. And systems can better understand data about local people’s health, allowing them to provide care that is tailored to individual needs.”

*Work with neighbour PCFs*

# Our regional footprints

## North East and Yorkshire

1. Cumbria and the North East
2. West Yorkshire and Harrogate
3. Humber, Coast and Vale
4. South Yorkshire and Bassetlaw

## North West

5. Lancashire and South Cumbria
6. Greater Manchester
7. Cheshire and Merseyside

## East of England

19. Cambridgeshire and Peterborough
20. Norfolk and Waveney
21. Suffolk and North East Essex
22. Bedfordshire, Luton and Milton Keynes
23. Hertfordshire and West Essex
24. Mid and South Essex

## London

25. North West London
26. Central London
27. East London
28. South East London
29. South West London

## Midlands

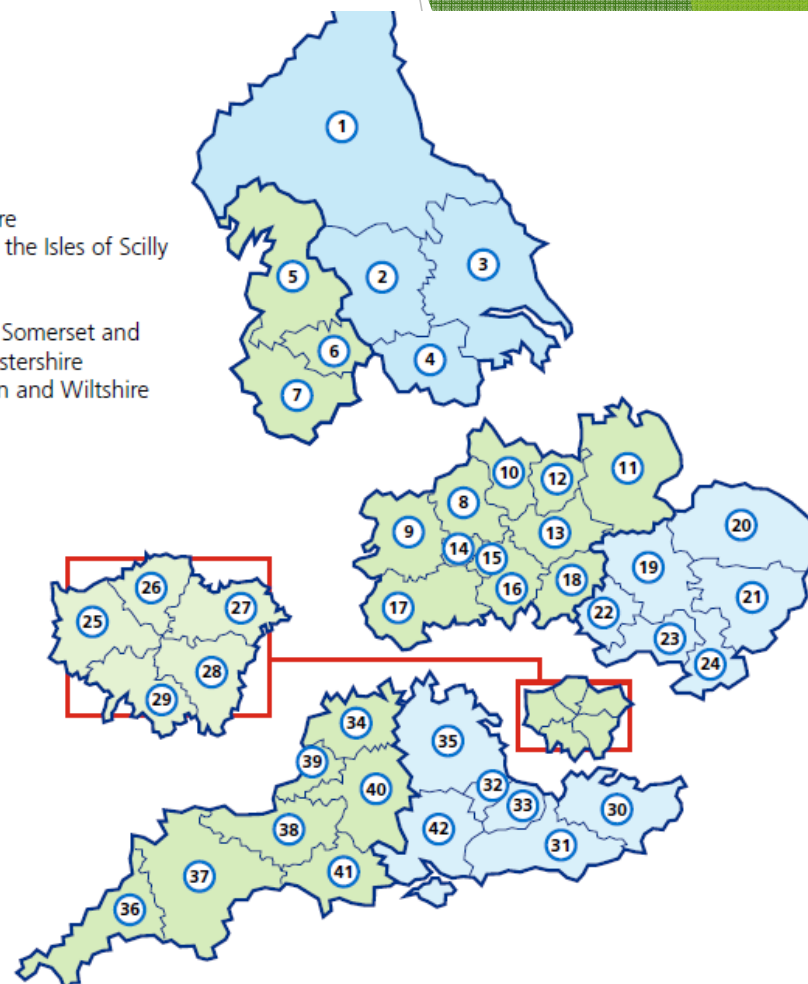
8. Staffordshire and Stoke on Trent
9. Shropshire and Telford and Wrekin
10. Derbyshire
11. Lincolnshire
12. Nottinghamshire
13. Leicester, Leicestershire and Rutland
14. The Black Country
15. Birmingham and Solihull
16. Coventry and Warwickshire
17. Herefordshire and Worcestershire
18. Northamptonshire

## South East

30. Kent and Medway
31. Sussex and East Surrey
32. Frimley Health and Care
33. Surrey Heartlands
35. Buckinghamshire, Oxfordshire and Berkshire West
42. Hampshire and Isle of Wight

## South West

34. Gloucestershire
36. Cornwall and the Isles of Scilly
37. Devon
38. Somerset
39. Bristol, North Somerset and South Gloucestershire
40. Bath, Swindon and Wiltshire
41. Dorset



# Money

- ▶ There is additional money going into the system to support his work.
- ▶ Local systems have already had their five year CCG allocations
- ▶ Additional funds will be made available (IF 1.13):

## “Fair share” basis

- Where activity is expected to happen everywhere
- Each system is given extra money on a “fair share” basis.

## Targeted

- If the whole country is not covered by a service based on specific needs or
- Some areas will be piloting or leading the way

*Ask your local system what “fair share” and targeted funding they are getting.*

## Specific requirements on local systems (over and above those mentioned earlier)

- ▶ Mental health - £2.3bn per year by 2023/24
  - ▶ 100% coverage for mental crisis services by 2023/24 (IF 2.33)
  - ▶ Development of school or college based mental health support teams (IF 2.34)
- ▶ From 2021/22 targeted investment to support integration and improvement of CYP services (IF 5.6)
- ▶ Learning disability and autism
  - ▶ Named senior responsible officer to oversee local implementation of LTP for LD+A (IF5.8)
  - ▶ Set out how proposals for LD+A align with plans for mental health, SEND, CYP services and health and justice (IF 5.10)
  - ▶ Set out the local offer for LD+A (IF 5.10)
  - ▶ Capital investment for the development of new housing options and suitable accommodation in the community (IF 5.13)

*Find out how  
these are being  
implemented  
locally.*

# Provider collaboratives

- ▶ Some mental health and LD+A services will be managed through *provider collaboratives* (IF 2.31)
- ▶ These will be responsible for managing the budget and patient pathway for specialised mental health care for people who need it in their local area
- ▶ These will enable local service providers to join together to deliver services in a more co-ordinated way
- ▶ NHS-led Provider Collaboratives will include providers from a range of backgrounds, including the voluntary sector, other NHS trusts and independent sector providers.

*Find out how these are being implemented locally.*

# Working with Healthwatch

- ▶ Healthwatch are the independent champion for people who use health and social care services
- ▶ They have a similar remit to PCFs in that they understand the needs and experiences of people who use services and speak on their behalf.
- ▶ Healthwatch are based on a local authority footprint like PCFs
- ▶ Working with on the LTP healthwatch can offer benefits for all
- ▶ Find the joint Contact / Healthwatch webinar at [https://contact.org.uk/media/1524119/what\\_is\\_a\\_parent\\_carer\\_forum\\_webinar.pdf](https://contact.org.uk/media/1524119/what_is_a_parent_carer_forum_webinar.pdf)

*Talk to your local Healthwatch - you can help each other influence the implementation of the LTP in your area*

# Coproduction

## ► Services for children and young people

“Establish local leadership - including named clinical and management leaders, coproduction with children, young people, families and carers and bringing together local leaders from across the NHS, local government, education and other partners to design and deliver transformation of the system.” (IF 5.5)

## ► Learning Disability and Autism

“Systems should involve people with lived experience and their families in checking the quality of care, support and treatment and set out how they will ensure that all local services make reasonable adjustments...” (IF 5.9)

## ► NHS Patient and Public Voice (PPV)

The NHS supports partners to be involved through “reimbursing expenses and, in certain circumstances, offering involvement payments”. There are four categories of PPV involvement (PPV policy 6.1) and some provision made for organisational involvement (PPV policy 8.1)

<https://www.england.nhs.uk/wp-content/uploads/2017/08/patient-and-public-voice-partners-expenses-policy-oct-17.pdf>

*Challenge your local system if this isn't happening.*

*Talk to your STP / ICS to make sure your PCF gets what it is entitled to.*

What should parent carer forums do?



Find out how key  
LTP commitments  
are being delivered  
in your local system

Work with your STP  
/ ICS to create the  
plan

Promote your expertise

a lot of the provisions in the LTP are  
similar to the requirements of the  
SEND reforms (e.g. personalisation,  
joint working, 0-25)

Understand the  
money

Make sure that  
carers of CYP  
(including siblings)  
are not forgotten

Partner with your  
NNPCF region and  
your neighbouring  
PCFs

Remind everyone  
that they must  
coproduce,  
coproduce,  
coproduce!



# What's next?



- ▶ 26 February - Learning disability and autism webinar in conjunction with NHSE
- ▶ Provider collaboratives webinar
- ▶ SEND Workstream webinar

Thank you and Questions



# Thank You!

- Thank you for attending with us today
- A short questionnaire will launch at the end of this webinar
- Please take the time to complete this it will help us plan future online training events including other topics you would like to see
- The recording of this Webinar, presentation and questions will be on the parent participation Resources page of Contact's website next week - an email confirming this will be sent to you once this is available

