

# Parent Carer Participation

## Team Contact details

**contact** *For families  
with disabled children*



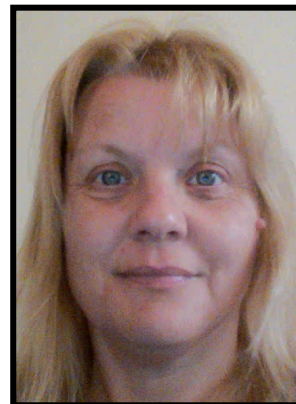
**Lisa Aldred**

**Parent Carer Participation Adviser**

*Yorkshire and Humber (Bradford, Calderdale, East Riding of Yorkshire, Hull, Kirklees, Leeds, North Yorkshire, Wakefield, York). North West (all except Wigan)*

**[lisa.aldred@contact.org.uk](mailto:lisa.aldred@contact.org.uk)**

**07421 451678**



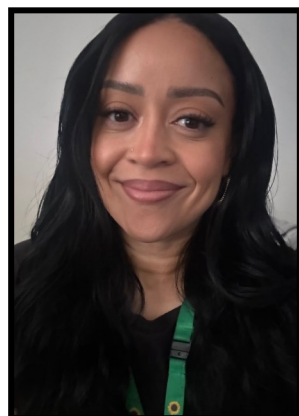
**Cindy Baylis**

**Parent Carer Participation Adviser**

*East Midlands and West Midlands, Yorkshire and the Humber (Barnsley, Doncaster, North East Lincolnshire, North Lincolnshire, Rotherham, Sheffield and Wigan)*

**[cindy.baylis@contact.org.uk](mailto:cindy.baylis@contact.org.uk)**

**07920 655079**



**Selina Eshun**

**Parent Carer Participation Adviser**

*London North East (Barnet, Barking and Dagenham, Camden, City of London, Enfield, Hackney, Haringey, Havering, Islington, Newham. Redbridge, Tower Hamlets, Waltham Forest) London North West (Brent, Hammersmith & Fulham, Harrow, Hillingdon, Hounslow, Kensington & Chelsea, Richmond, Westminster)*

**[selina.amar@contact.org.uk](mailto:selina.amar@contact.org.uk)**

**07355 614 698**



**Zenab Farah**

**Parent Carer Participation Adviser**

*South East, Bracknell Forest, Brighton and Hove, East Sussex, Kent, Medway, Milton Keynes, West Berks, West Sussex. Windsor and Maidenhead.*

**[zenab.farah@contact.org.uk](mailto:zenab.farah@contact.org.uk)**

**07355 614699**



**Sue Mennear**

**Parent Carer Participation Adviser**

*South West (except Bristol) & South East (Buckinghamshire, Hampshire, Isle of Wight, Oxfordshire, Portsmouth, Reading, Slough, Southampton, Surrey and Wokingham)*

**[sue.mennear@contact.org.uk](mailto:sue.mennear@contact.org.uk)**

**07920 655056**



**Heather Tarbuck**

**Parent Carer Participation Adviser**

*London North East (Ealing) South London (Bexley, Bromley, Croydon, Greenwich, Kingston upon Thames, Lambeth, Lewisham, Merton, Southwark, Sutton and Wandsworth) South West (Bristol, City of)*

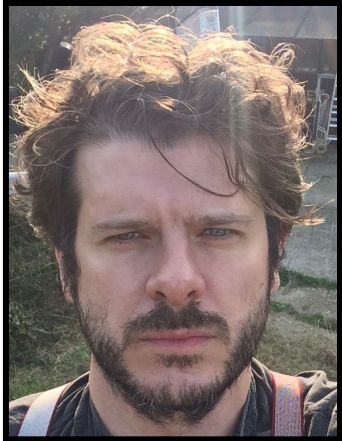
**[heather.tarbuck@contact.org.uk](mailto:heather.tarbuck@contact.org.uk)**

**020 73264522/07920 655165**

# Parent Carer Participation

## Team Contact details

**contact** *For families  
with disabled children*



**Ben Bennett**  
**Grants Manager**  
[ben.bennett@contact.org.uk](mailto:ben.bennett@contact.org.uk)  
**07421 450545**



**Sarah Lee**  
**Operations Lead and Parent Carer  
Participation Adviser**  
*North East*  
[sarah.lee@contact.org.uk](mailto:sarah.lee@contact.org.uk)  
**07920 654967**



**Kate Lovelace-Collins**  
**Head of Parent Carer Participation**  
[kate.lovelace-collins@contact.org.uk](mailto:kate.lovelace-collins@contact.org.uk)  
**07458 045694**



**Olivia Newbolt**  
**Operations Lead and Parent Carer  
Participation Adviser**  
*East of England (Bedford borough,  
Cambridgeshire, Central Bedfordshire, Essex,  
Hertfordshire, Luton, Norfolk, Peterborough,  
City of, Southend on Sea, Suffolk and Thurrock )*  
[livia.newbolt@contact.org.uk](mailto:livia.newbolt@contact.org.uk)  
**07579 852056**

# Parent Carer Participation

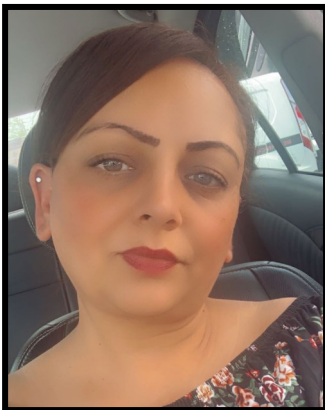
## Team Contact details



**Jaime Dowling**  
**Grants Co-ordinator**  
[jaime.dowling@contact.org.uk](mailto:jaime.dowling@contact.org.uk)



**Amanda Elliot**  
**Strategic Health Lead**  
[Amanda.elliott@contact.org.uk](mailto:Amanda.elliott@contact.org.uk)  
**07941 964590**



**Anapal Rehal**  
**Programme Administrator**  
[anapal.rehal@contact.org.uk](mailto:anapal.rehal@contact.org.uk)  
**07421 450581**



**Helen Reid**  
**Programme Officer**  
[helen.reid@contact.org.uk](mailto:helen.reid@contact.org.uk)  
**07738 895007**

Registered Charity No. 284912  
Charity registered in Scotland  
No. SC039169 Company limited  
by guarantee, registered in  
England and Wales No. 1633333  
VAT Registration Number  
GB 749 3846 82