

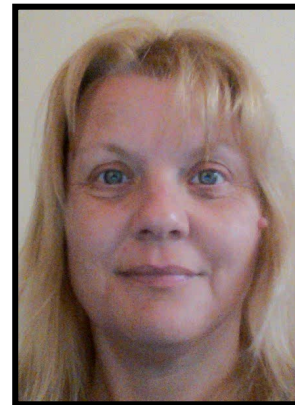
# Parent Carer Participation

## Team Contact details

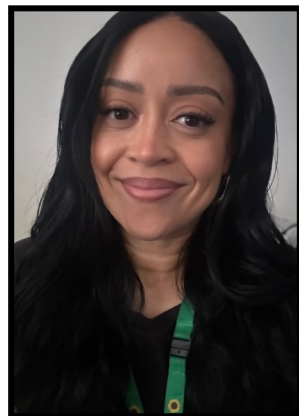
**contact** *For families  
with disabled children*



**Lisa Aldred**  
**Parent Carer Participation Adviser**  
*Yorkshire and Humber (Bradford, Calderdale, East Riding of Yorkshire, Hull, Kirklees, Leeds, North Yorkshire, Wakefield, York). North West (all except Wigan)*  
**[lisa.aldred@contact.org.uk](mailto:lisa.aldred@contact.org.uk)**  
**07421 451678**



**Cindy Baylis**  
**Parent Carer Participation Adviser**  
*East Midlands and West Midlands, Yorkshire and the Humber (Barnsley, Doncaster, North East Lincolnshire, North Lincolnshire, Rotherham, Sheffield and Wigan)*  
**[cindy.baylis@contact.org.uk](mailto:cindy.baylis@contact.org.uk)**  
**07920 655079**



**Selina Eshun**  
**Parent Carer Participation Adviser**  
*London North East (Barnet, Barking and Dagenham, Camden, City of London, Enfield, Hackney, Haringey, Havering, Islington, Newham. Redbridge, Tower Hamlets, Waltham Forest) London North West (Brent, Hammersmith & Fulham, Harrow, Hillingdon, Hounslow, Kensington & Chelsea, Richmond, Westminster)*  
**[selina.amar@contact.org.uk](mailto:selina.amar@contact.org.uk)**  
**07355 614 698**



**Zenab Farah**  
**Parent Carer Participation Adviser**  
*South East, Bracknell Forest, Brighton and Hove, East Sussex, Kent, Medway, Milton Keynes, West Berks, West Sussex. Windsor and Maidenhead.*  
**[zenab.farah@contact.org.uk](mailto:zenab.farah@contact.org.uk)**  
**07355 614699**

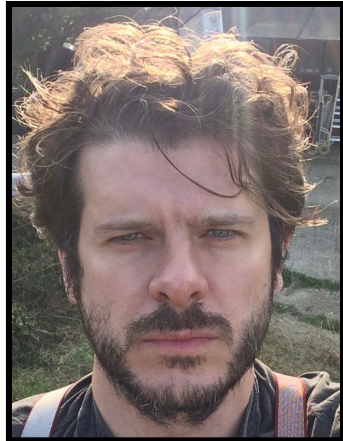


**Sue Mennear**  
**Parent Carer Participation Adviser**  
*South West (except Bristol) & South East (Buckinghamshire, Hampshire, Isle of Wight, Oxfordshire, Portsmouth, Reading, Slough, Southampton, Surrey and Wokingham )*  
**[sue.mennear@contact.org.uk](mailto:sue.mennear@contact.org.uk)**  
**07920 655056**

# Parent Carer Participation

## Team Contact details

**contact** *For families  
with disabled children*



**Ben Bennett**

**Grants Manager**

**ben.bennett@contact.org.uk**

**07421 450545**



**Sarah Lee**

**Operations Lead and Parent Carer  
Participation Adviser**

*North East, London North East (Ealing) South  
West (Bristol, City of) South London (Bexley,  
Bromley, Croydon, Greenwich, Kingston upon  
Thames, Lambeth, Lewisham, Merton,  
Southwark, Sutton and Wandsworth)*

**sarah.lee@contact.org.uk**

**07920 654967**



**Kate Lovelace-Collins**

**Head of Parent Carer Participation**

**kate.lovelace-collins@contact.org.uk**

**07458 045694**



**Olivia Newbolt**

**Operations Lead and Parent Carer  
Participation Adviser**

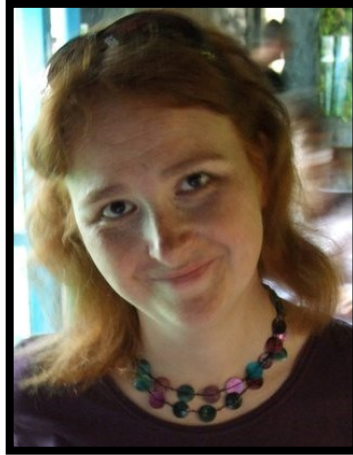
*East of England*

**olivia.newbolt@contact.org.uk**

**07579 852056**

# Parent Carer Participation

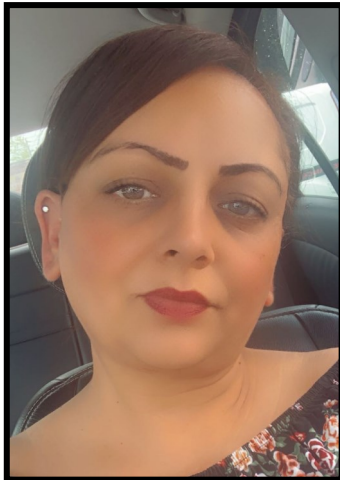
## Team Contact details



**Jaime Dowling**

**Grants Co-ordinator**

[jaime.dowling@contact.org.uk](mailto:jaime.dowling@contact.org.uk)



**Anapal Rehal**

**Programme Administrator**

[anapal.rehal@contact.org.uk](mailto:anapal.rehal@contact.org.uk)

**07421 450581**



**Helen Reid**

**Programme Officer**

[helen.reid@contact.org.uk](mailto:helen.reid@contact.org.uk)

**07738 895007**

Registered Charity No. 284912  
Charity registered in Scotland  
No. SC039169 Company limited  
by guarantee, registered in  
England and Wales No. 1633333  
VAT Registration Number  
GB 749 3846 82