



National Network of Parent Carer Forums

'Our Strength Is Our Shared Experience'

NNPCF: This year and next year

A review of the last year and coproducing our approach to the next year



Overview

- ▶ A review of the last year
- ▶ Looking forward
 - ▶ Coproducing our priorities for 2022-23
 - ▶ Coproducing the values of the NNPCF



Some context

- ▶ We know that things are tough
 - ▶ Tough on families with SEND
 - ▶ Tough for parent carer forums
- ▶ We will be covering what is wrong in the SEND system and what needs to be in the SEND Green Paper session this afternoon
- ▶ But, it is also important to take a moment to reflect on the difference you have made

A review of the last year

Mrunal Sisodia - NNPCF Co-chair

For this year, we identified four priorities

Support the recovery from Covid 19

- Ensure that the parental voice is heard and work with government and the NHS to ensure that children with SEND are not further disadvantaged through recovery..

The NHS Long Term Plan

- Represent SEND families in the development and implementation of the NHS Long Term Plan which includes many important changes that will support our children.

Improve accountability in the SEND system

- Work with Ofsted and the Care Quality Commission to develop the next phase of local area inspections and continue our work on the SEND tribunal single route of redress.

The SEND Review (and some others)

- Engage in the work of the SEND review to support the DfE to create the far reaching changes we believe are necessary

Support the recovery from Covid 19

Our work	Our impact
We highlighted the challenges faced by CYP with SEND attending school after lockdown	Anxiety and the inability of schools to meet SEND needs recognised as key issues by the Secretary of State
Input into the planning for the government response to Omicron	The need for coproduction and reasonable adjustments includes in DfE and NHSE guidance
Highlighted issues with the vaccination of CYP with SEND	Guidance on who is eligible for vaccines and how and when to get them clarified and reissued by NHSE. The need for reasonable adjustments re-iterated
Emphasised the need for school catch up to be holistic, not just academic	Guidance changed so school catch up monies can / should be used for therapy services as well as academic tutoring. Need for supportive, multi-disciplinary and non-punitive approach for SEND pupils added to back to school guidance
Highlighted the issues with transitions and annual reviews	???

NHS Long Term Plan



Our work	Our impact
Worked with our partners in the sector (notably the Health Policy Influencing Group) to make children more prominent in the Health and Care Bill	Some specific provisions for children added to the current draft of the Bill including a forward plan for CYP, an exec lead for CYP (inc. SEND) & requirement to involve CYP and families.
Ran webinars with NHSE and Contact on Integrated Care Systems (ICSs) and what they mean for parent carer forums and CYP with SEND	Equipping parent carer forums to work with the ICSs We would still like to see Integrated Care Systems add children with SEND to their priorities
NNPCF appointed strategic partner for the Learning Disability and/or Autism (LDA) workstream of the long term plan.	NNPCF joins LDA board and is able to highlight issues such as conflicts between autism in schools project and behavioural hubs set up by DfE.
NNPCF engagement in projects such as Autism in Schools and Keyworking	Projects being rolled out now across the country with engagement from local parent carer forums. We have shared concerns about this roll out with LDA management
Impossibly long waits for community services (inc paediatricians and therapies), diagnoses and appointments	???

Improve accountability in the SEND system



Our work	Our impact
Built our relationship with senior leaders at Ofsted - highlighted the need for inspectors to highlight SEND issues.	Ofsted annual report includes section on SEND and many references to issues identified by parent carer forums
Work with Ofsted and the Care Quality Commission to shape the new local area inspection framework	This is work in progress
Fed back forum experiences during the current round of local area inspections and revisits	Although the inspections are essential, some issues continue - e.g. consistency of approach and the engagement of PCFs
A member of the SEND tribunal national trial	The powers of the tribunal to make non-binding recommendations on health and social care are continuing.

The SEND Review (and some others)



Department
for Education

Our work	Our impact
SEND review - please join our webinar this afternoon	??? Green paper to be published soon
<p>Met with Baroness Barran on the Schools White Paper</p> <p>We spoke about the need for the school system to prioritise SEND, to ensure that school leaders were incentivised to be inclusive and that there is no coherence in the accountability for SEND between local authorities, schools and regional schools commissioners</p>	??? White paper to be published soon
<p>Children's social care review</p> <p>Worked extensively with Josh MacAllister and the review team to feed in key points from parent carer forums.</p> <p>Hosted a webinar with Josh MacAllister to ensure PCFs could feed directly into the review</p>	<p>Key points from the NNPCF were included in the "Case for Change" published by the review</p> <p>??? Review findings to be published soon.</p>

Input into consultations

- ▶ We have also input into the following consultations:
 - NHS Provider Selection Regime Consultation
 - The Independent Review of Children's Social Care
 - Behaviour management strategies, in-school units and managed moves Call for Evidence
 - Nice Guidance: Disabled children and young people up to 25 with severe complex needs: integrated service delivery and organisation across health, social care and education
 - The national strategy for autistic children, young people and adults: 2021 to 2026
 - Shaping Future Support: The Health and Disability Green Paper
 - NHSE: Core20PLUS5
 - Ofqual: Guidance on designing and developing accessible assessments
 - School attendance: improving consistency of support
- ▶ And we are working on these at the moment
 - Changes to the school admission appeals code
 - Revised behaviour in schools, guidance and suspension and permanent exclusions guidance
 - The House of Lords Select Committee Children and Families Act 2014: Call for Evidence



We are also improving the way we run ourselves

Implemented a new timesheet system

Recruited three new steering group members

Recruited three new people to the management team

Implemented a new bookkeeping system

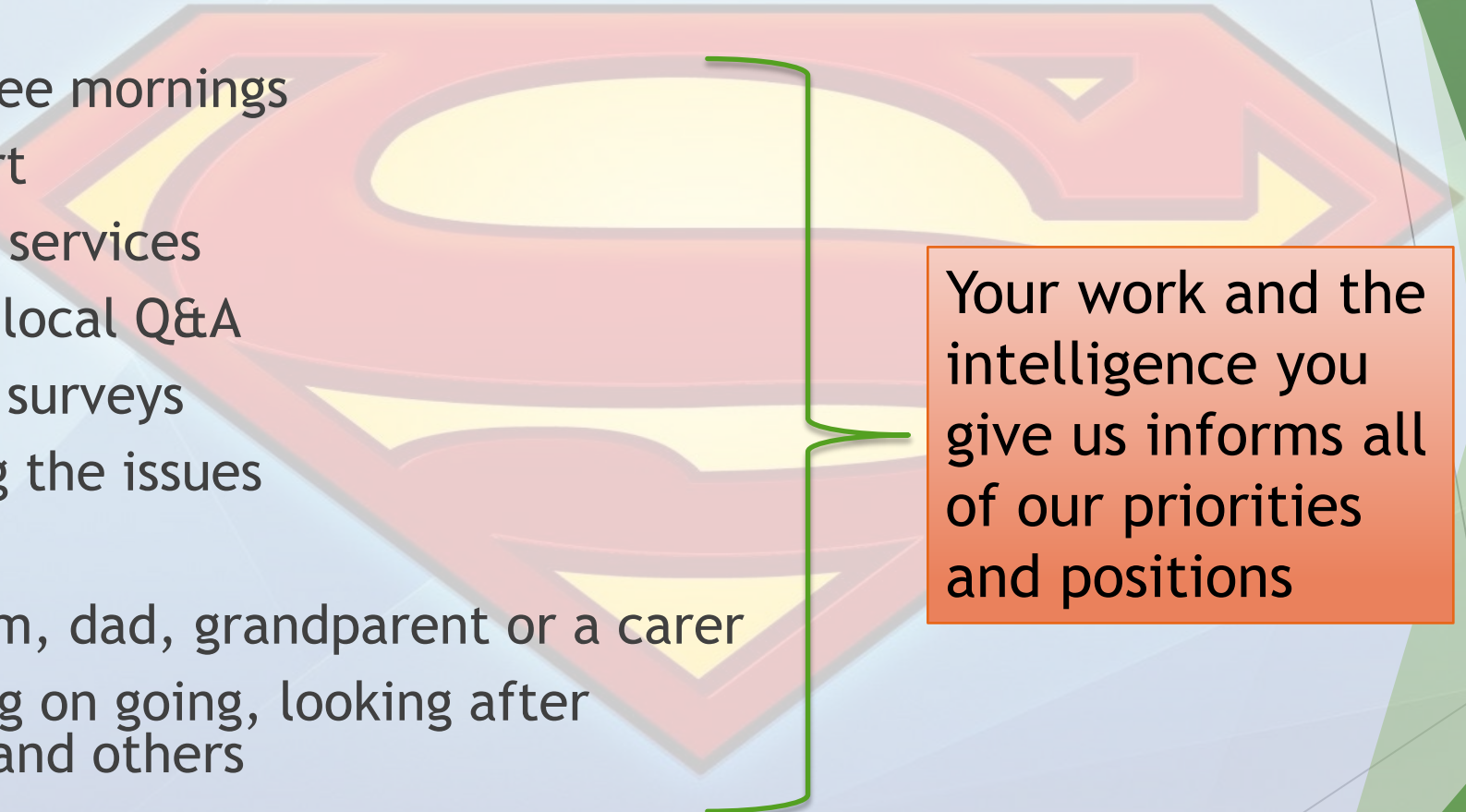
Appointed a new accountant, IT, HR adviser and legal support

Made our steering group employees, not contractors

Set up a new bank account

Starting operating as an independent Community Interest Company from 1st October

We can't do any of this without you

- 
- ▶ Virtual coffee mornings
 - ▶ Peer support
 - ▶ Signposting services
 - ▶ Developing local Q&A
 - ▶ Conducting surveys
 - ▶ Highlighting the issues

 - ▶ Being a mum, dad, grandparent or a carer
 - ▶ Just keeping on going, looking after yourselves and others

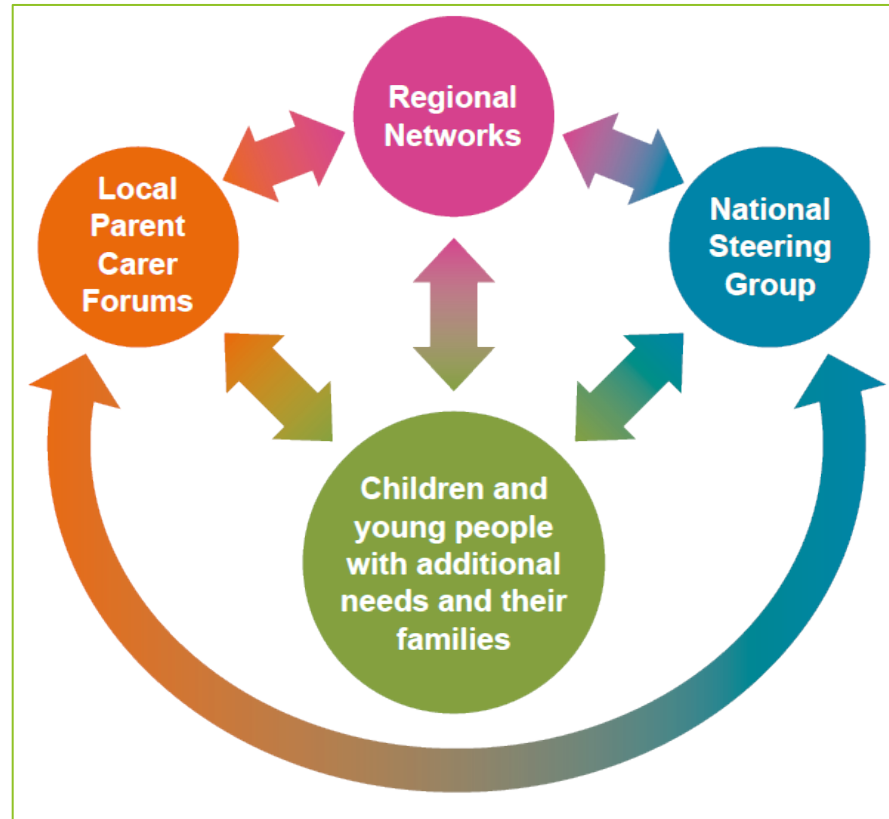
Your work and the intelligence you give us informs all of our priorities and positions

NNPCF priorities 2022-23

Kay Moore - NNPCF policy and consultations lead

Heather Delaney - NNPCF national representative

Our working model



What are Parent Carers Forums focussing on?

We asked you to identify your forum's top 10 priorities.

- 65 Responses
- Responses from across all 9 regions
- Priorities were identified by surveys and/or Steering Group discussion.



Top Ten Priorities

1. Waiting times for assessments- particularly Autism
2. Access to mental health services and support (waiting times)
3. SEND support in schools
4. Quality of EHCP
5. Lack of specialist school places
6. Emotionally Based School Non-Attendance
7. Post 16 education
8. Annual Reviews
9. Waiting times for community therapy services (OT, SALT, Physios)
10. Access to short breaks

Our priorities this year...

Support Covid 19 response and recovery

- Ensure that the parent-carer voice is heard and work with government and the NHS on the covid 19 response and recovery to ensure that children with SEND are not further disadvantaged. Understand and articulate the impact on key SEND areas such as EHCPs, annual reviews, community services and short breaks.

The SEND Review & wider policy initiatives

- Engage in the work of the SEND review to support the DfE and NHS to create the far reaching changes we believe are necessary. Engage with wider policy initiatives including the DfE schools white paper and the Social Care Review.

The NHS Long Term Plan and other structural changes

- Represent SEND families in the development and implementation of the NHS Long Term Plan which delivers many important changes that will support our children including Learning Disability and / or Autism, the SEND workstream and mental health. Also empower the SEND and parent-carer voice in the implementation of integrated care systems and other structural changes in the health care system.

Improve accountability in the SEND system

- Work with Ofsted and the Care Quality Commission to develop the next phase of local area inspections.

Operate effectively as a CIC

- This includes recruitment and training of staff, policies, processes, financial controls, technology infrastructure, sourcing appropriate external support and ensuring good governance and compliance.

We are representing your priorities

1. Waiting times for assessments- particularly Autism

2. Access to mental health services and support (waiting times)

9. Waiting times for community therapy services (OT, SALT, Physios)

6. Emotionally Based School Non-Attendance

4. Quality of EHCP

8. Annual Reviews

3. SEND support in schools

5. Lack of specialist school places

7. Post 16 education

10. Access to short breaks

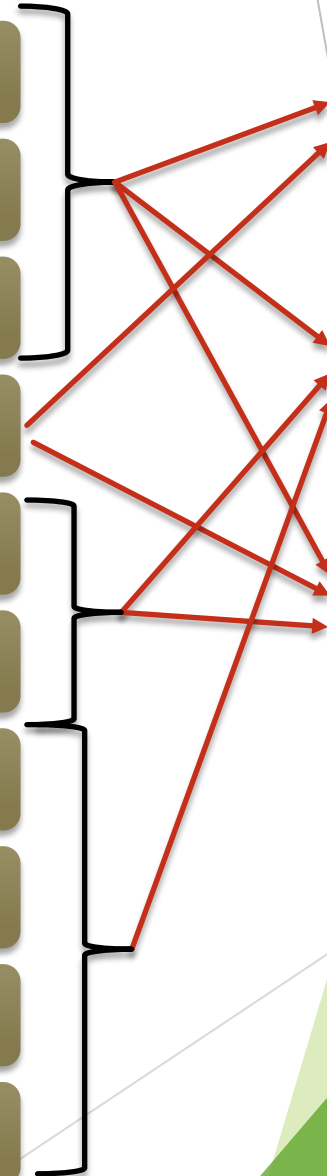
Support Covid 19 response and recovery

The SEND Review & wider policy initiatives

The NHS Long Term Plan and other structural changes

Improve accountability in the SEND system

Operate effectively as a CIC



You Said...

Very difficult to
pick 10 only!

Children who
don't meet
threshold for
assessment
and support

Inclusion

Responding to
local area
Accelerated
Progress Plan /
Improvement
plan developed
after Ofsted /
CQC revisit

We just haven't
the capacity for
them all!

Early
Help

Disability
awareness.
Understanding
and acceptance

All
co-production
needs
awareness
raising

Crisis
support

Please log into Menti.com

Code
7807 9625

NNPCF core principles / values

Kath Bromfield - Northwest Steering Group member

Jayne Fitzgerald - Yorkshire and Humber Steering Group member

Please log into Menti.com
Code
7807 9625

Coproducing our values

Sense checking the results

- ▶ As we emerge out of Covid 19 restrictions, the NNPCF wanted to take stock and look forward to the next 5 years
- ▶ Our plans for the last 2 years had been scrapped and many of the NNPCF steering group had never even met
- ▶ To help us plan the coming years and bond as a team we agreed to coproduce a refresh of core principles or values for the NNPCF
- ▶ In January and February, we approached 55 people and organisations including all local parent carer forums, NNPCF staff, government and NHS partners, charities and other partners
- ▶ We asked them to share the key words they associate with the NNPCF, their experience of the NNPCF and what the NNPCF means to them
- ▶ The next three slides share the words they (and you) used

UNIQUE



Please log into Menti.com
Code
7807 9625

purpose perspective
challenge enthusiasm critical informed
inclusive inspiring
status forward compassion collaboration articulate
exciting heard belonging challenger
empowerment picture
thinking open supportive
sincerity powerful
difference big respect constructive challenging
support openness
collaborative family friend dedicated
essential energising
active pro willing
co-production
valued professional
deployment values determined
reasonable

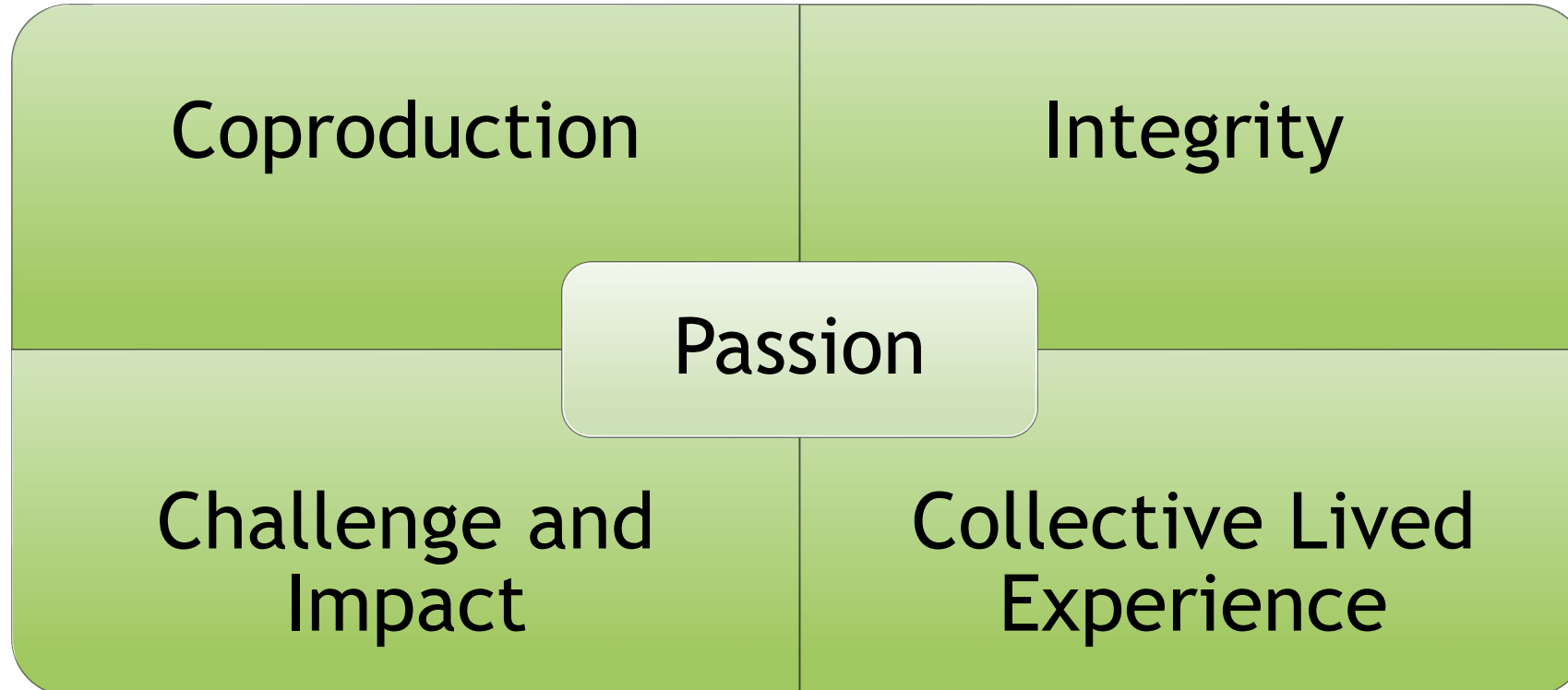


Please log into Menti.com
Code
7807 9625

Our values

Please log into Menti.com
Code
7807 9625

- The NNPCF steering group met last week to work through these words and group the ones that best reflected the feedback from stakeholders and what is most important to the NNPCF



Help us to define what these words mean to you

- ▶ You helped us to arrive at these values - forums and other stakeholders shared what was important to them about the NNPCF
- ▶ Words have meanings - we need your help to tell us what these words mean to you
- ▶ This will help to define our values and behaviours

Please log into Menti.com

Code
7807 9625

Thank you for coproducing our values!

- ▶ We will use your input to create a list of what these words mean to us and the behaviours that we associate with our values
- ▶ Look out for an update when we have incorporated your input

The background features abstract, overlapping green geometric shapes, primarily triangles and polygons, in various shades of green, creating a modern and dynamic visual effect.

See you this afternoon for our session on
NNPCF input into the SEND Green Paper

1-2pm today