

# Health and SEND



England

**Understanding health structures  
nationally, regionally and locally:  
working with your ICB**

Presented by:  
Diana Boyd - Family Carer Advisor  
National NHSE SEND Team  
Joined by South West Region

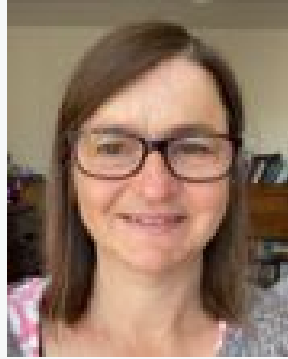


# Agenda for the session

1. Introduction to the NHS England national SEND team and family carer advisor role
2. Overview of national NHS England SEND workstreams
3. Overview of the NHS operating model: national, regional and local responsibilities for SEND in NHS England
4. Tips to parent carers for understanding ICBs
5. NHS England South West Regional perspective on joint working regionally and with ICBs
6. Questions

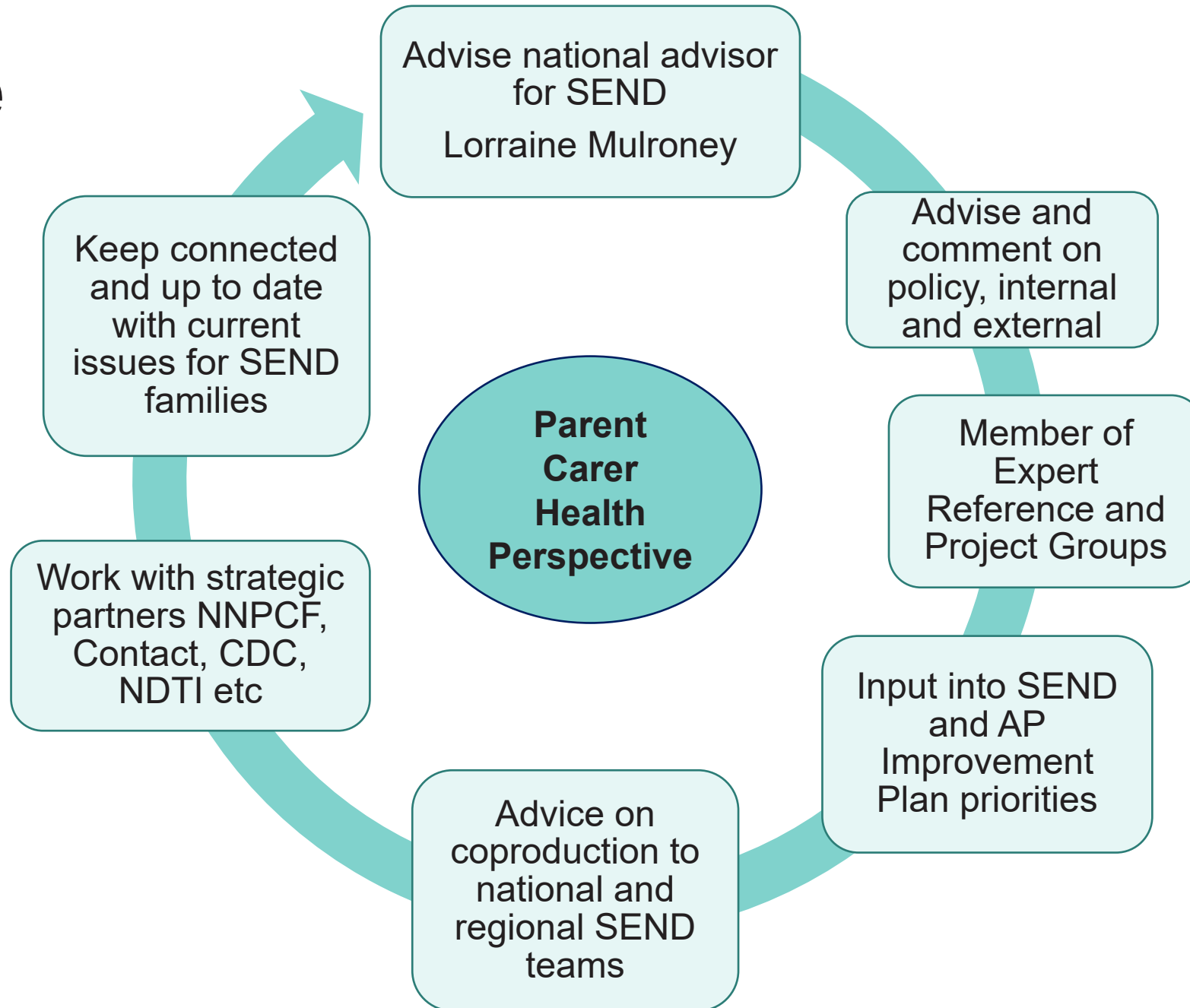
# **Family Carer Advisor Role, NHSE**

# My background



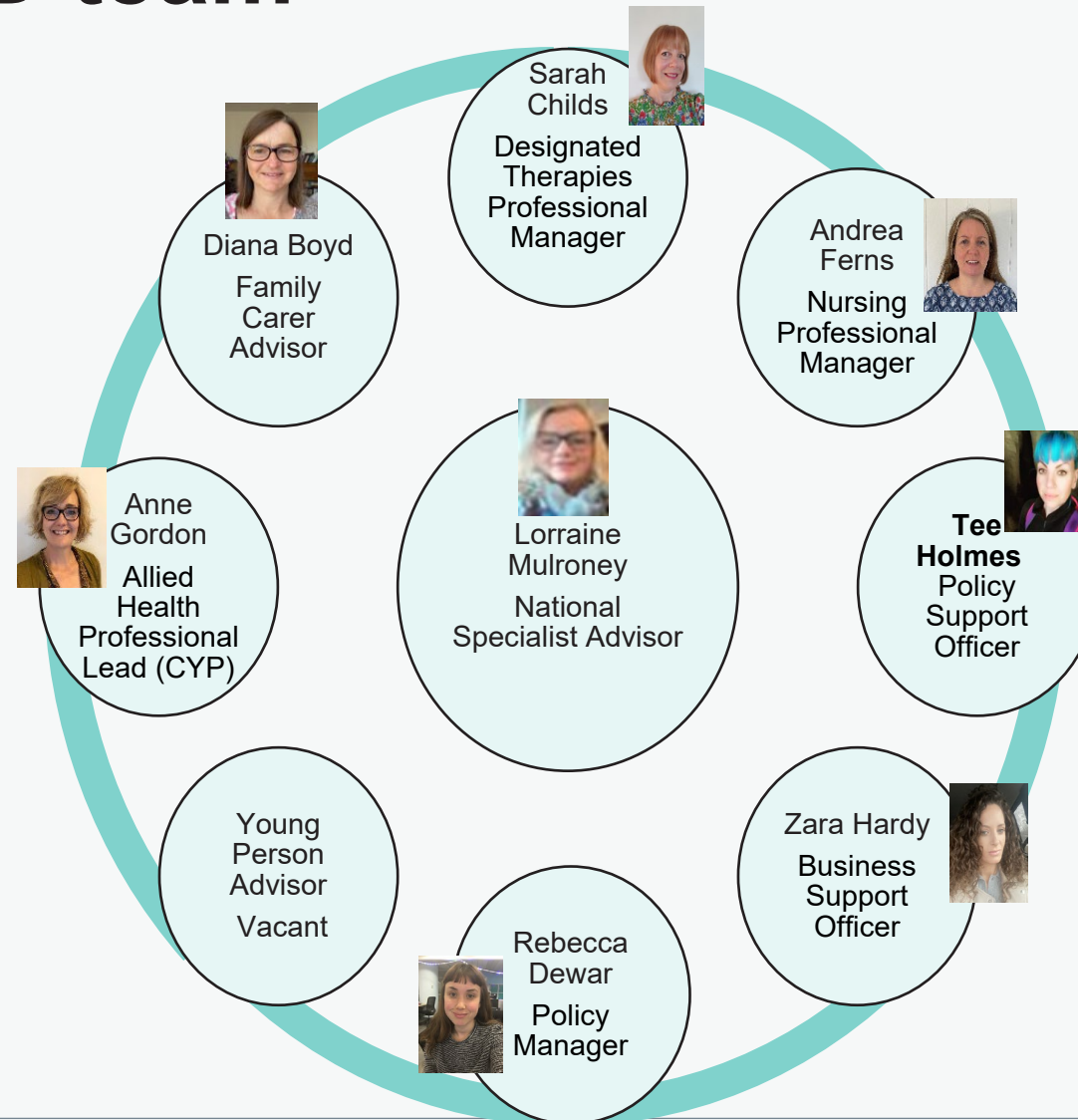
- I joined the SEND parent carer community in around 2007, as a parent carer with two sons with SEND
- I was the former chair of Brighton and Hove Parent Carer Forum (PaCC)
- I am now on the PaCC steering group
- I work within a local area SEND governance structure across an ICB and local authority footprint across Sussex


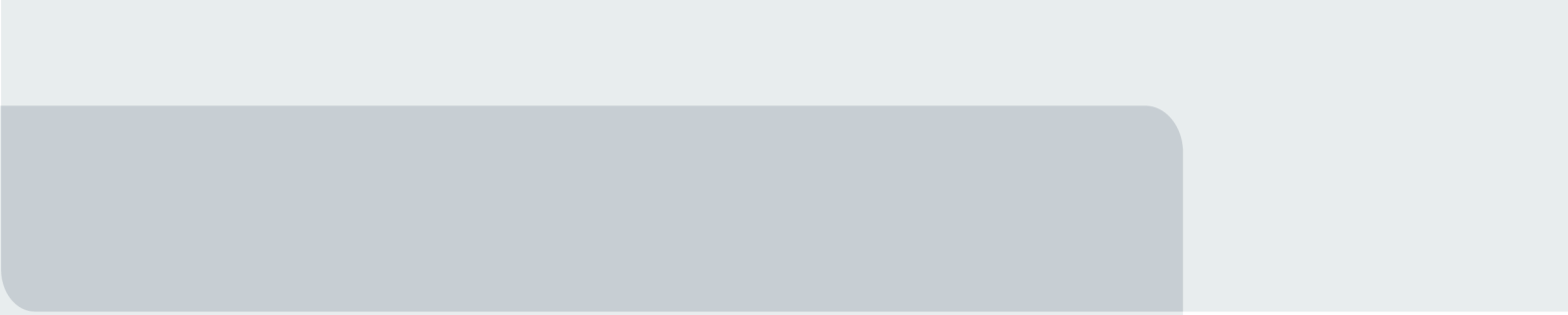
# My role



# National SEND team

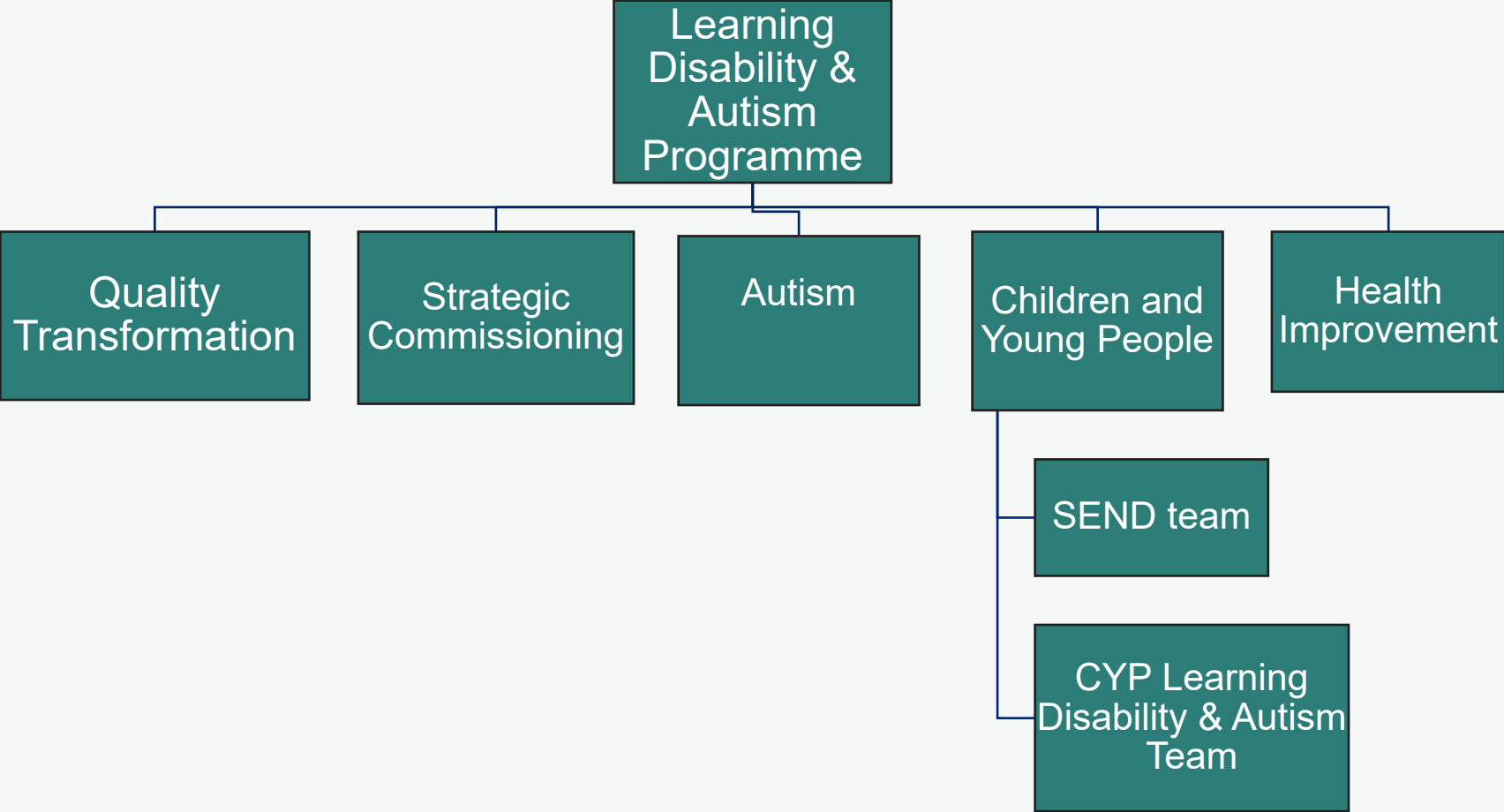
## Who is who?





# **SEND workstreams nationally**

# Where SEND sits in NHSE







# Interdependencies and matrix working with SEND

Some of the teams we matrix work with:

Learning disability and autism

Personal Health Budgets

Health and Justice

Safeguarding

Continuing Care and Continuing Healthcare

Palliative and End of Life Care

Health inequalities

Allied Health Professionals

Digital Innovation

Children and Young People's Transformation

Mental Health

Children's Community Services

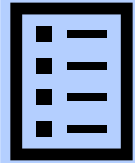
**Work we do with wider teams includes: sharing intelligence from SEND inspections; Contributing to national guidance/policy; Linking up between CYP and adult pathways**



# SEND interdependencies

- **NHS Long Term Plan 2019** includes commitments to learning disability and autism. E.g. Autism in Schools, DSR, CETR guidance, Keyworkers, sensory checks in special schools. These are not part of the national SEND workstreams, though closely linked.
- **SEND** workstream linked to statutory framework Children and Family's Act 2014. Focus on the SEND reforms, commitments in SEND and AP Improvement Plan and delivery of the nine Change Programme Partnerships.
- Strong **interdependencies internally**.
- **Externally**: close partnership with Department for Education, Department of Health and Social Care, Ofsted and CQC, Royal Colleges, NNPCF, Contact and Council for Disabled Children.

# 2023/4 SEND workstreams



**SEND  
Improvement  
SEND and AP  
Implementation  
Board**



**Delivering  
Improvement  
Pre and post  
Inspection**



**ICB SEND  
Statutory  
Duties  
(Annual Heat  
Maps)**



**Designated  
Officer  
Functions**



**Clinical  
Interventions  
in education  
settings**

# 10 Commitments from SEND and AP Improvement plan

2023-2025  
Workplan



- 1) Designated Officer Functions
- 2) Workforce and Research



- 3) ICB Leadership
- 4) Regional Change Programme



- 5) National Standards
- 6) Dashboards & Inclusion Partnerships
- 7) Inspections & Improvement



- 8) Digital EHCP and Template
- 9) Practice Guides
- 10) Early Language support for every Child (ELSEC)

# **National, regional and local working in SEND**



# Integrated Care Boards and NHS England Operating Framework

- 2022 Health and Care Act: Transfer of statutory responsibilities from Clinical Commissioning Groups (CCGs) to Integrated Care Boards (ICBs).
- The NHSE Operating Framework describes the **roles that NHS England, integrated care boards and NHS providers will now play**, working alongside our partners in the wider health and care system. [NHS England »](#)  
[NHS England operating framework](#)



# SEND Operating Model

- **ICBs** are the NHS commissioning bodies, and hold statutory roles (e.g. executive lead for SEND) and functions. They have joint **accountability** with local area partners for delivery of SEND statutory duties. They implement National policy and SEND place-based priorities.
- **Regional** NHSE teams have oversight of ICBs and provide support and challenge to local area partnerships jointly with DfE. They work direct with ICBs, and have joint responsibility with DfE for inspections and improvement.
- **National** role includes working on national SEND policy and statutory guidance, and strategic improvement planning with DfE and DHSC and other national partners.

# National and regional SEND context



- **National:** Two joint senior responsible officers for SEND - representative on national Implementation Board - James Sanderson, Director of Community Health & Personalisation;. Tom Cahill National Director for Learning Disability and Autism.
- **Regional** SEND function – four regions SEND function sits in Learning Disability and Autism (London, SW, SE and Midlands), 2 under Nursing and Safeguarding (NEY and East) and 1 under CYP and Nursing (Northwest)
- **ICB** - Do you know where SEND sits in the ICB structure? Is it nursing and quality or commissioning or other?



# **Integrated Care Boards and SEND**

# New statutory role for integrated care systems to have an executive lead for children and young people with SEND

## Executive lead roles

- Children and young people (aged 0 to 25)
- **Children and young people with special educational needs and disabilities (SEND)**
- Safeguarding (all-age), including looked after children
- Learning disability and autism (all-age).
- Down syndrome (all-age).
- Mental Health

## SEND

The executive guidance lays out key areas of work for SEND executive leads. Includes:

- Ensuring effective co-production and engagement while working closely with children and young people with SEND, their families and local parent carer forums. This will ensure the experiences of SEND provision are understood and used to improve service provision.
- Link to guidance [NHS England » Executive lead roles within integrated care boards](#)



# Learning from your Local ICB website – E.g. Sussex

- **Does the ICB have inspection reports on their website?**

[Inspection report into special educational needs and disabilities published - Sussex Health and Care \(ics.nhs.uk\)](#)

- **How is the ICB set up in terms of governance, members and place-based decisions?**

The place based directors are clear and the Healthwatch members (not SEND specific)

[Sussex Health and Care Assembly - Sussex Health and Care \(ics.nhs.uk\)](#)

- **Who is the ICB Executive Lead for SEND?**

Exec Lead for SEND is referenced in inspection report and above website link

- **What does the Integrated Care Strategy look like for CYP and SEND?**

[Improving Lives Together](#) is the Sussex Integrated Care Strategy, setting out the ambition across health and care in Sussex over the next five years. Page 17 includes CYP with place based sections referring to SEND

- **What is in the Joint Forward Plan?**

[Shared Delivery Plan](#) aims to bring together all the work taking place into one plan so all organisations can collectively focus on bringing the greatest benefit to local people.

---

## Thank You



[@nhsengland](https://twitter.com/nhsengland)



[company/nhsengland](https://www.linkedin.com/company/nhsengland)



[england.nhs.uk](http://england.nhs.uk)

Healthier **Together**



**NORTH  
SOMERSET** **PS  
WT**  
PARENT CARERS WORKING TOGETHER

**NHS**

Bristol, North Somerset  
and South Gloucestershire  
Integrated Care Board

Improving health and care in Bristol,  
North Somerset and South Gloucestershire

# National Network of Parent Carer Forums Conference

## 14<sup>th</sup> November 2023

**Kenton Mee: CEO North Somerset Parent Carers – Working Together**

**Mark Hemmings: Children’s Manager Bristol, North Somerset and South  
Glos ICB**



# Clown fish and anemones....

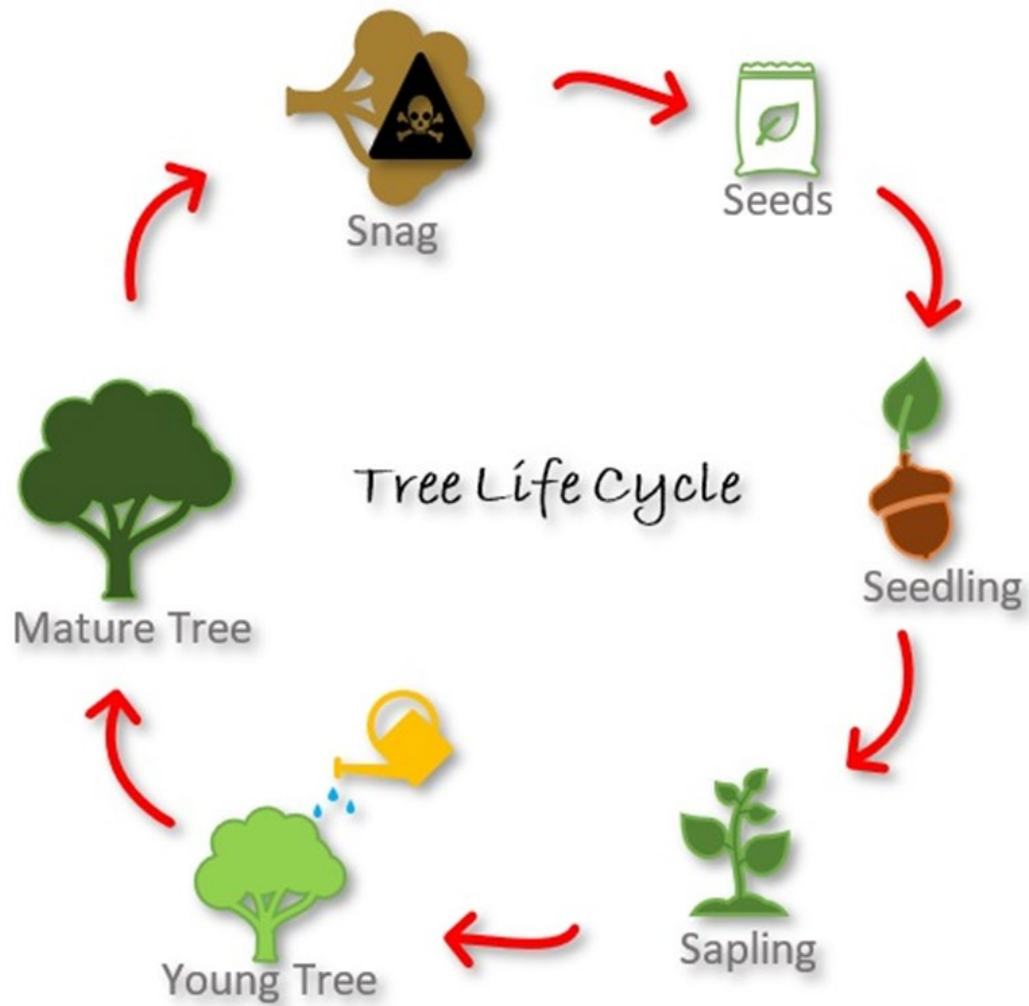




# Firstly, we need all of these at very least..... !



# Secondly, it takes time.....

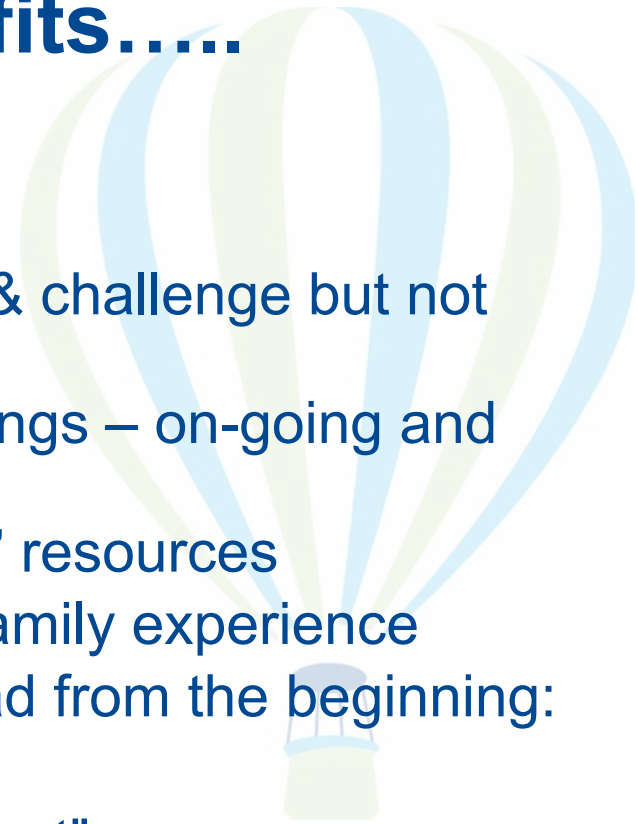




# Some of the mutual benefits.....

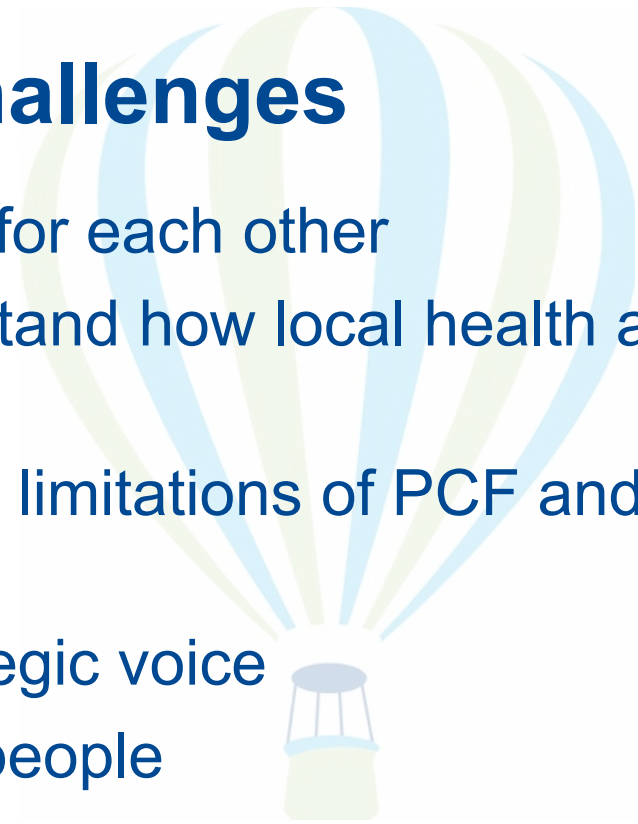


1. Clarity of purpose – representation & challenge but not campaigning
2. Scheduled “working together” meetings – on-going and emerging issues
3. Additional core funding and “in kind” resources
4. Parent carer survey – evidence of family experience
5. Coproduction - commissioned to lead from the beginning:
  - “Keyworker Team”
  - “Neurodiversity Transformation Project”
  - “Autism in Schools”
  - “Peer & Professional Workshops”
  - “Needs led” training
6. Essentially helping PCF build into a professional organisation



# Overcoming inevitable challenges

- Make dedicated and regular time for each other
- PCF needs to take time to understand how local health and care system works
- ICB needs to understand role and limitations of PCF and nurture development
- PCF needs to have a strong strategic voice
- Ensure connecting with the right people
- Recognise the power of putting on an event bringing commissioners, stakeholders and families together – really helps improve communication and breakdown perceived barriers



# Healthier Together

Improving health and care in Bristol,  
North Somerset and South Gloucestershire





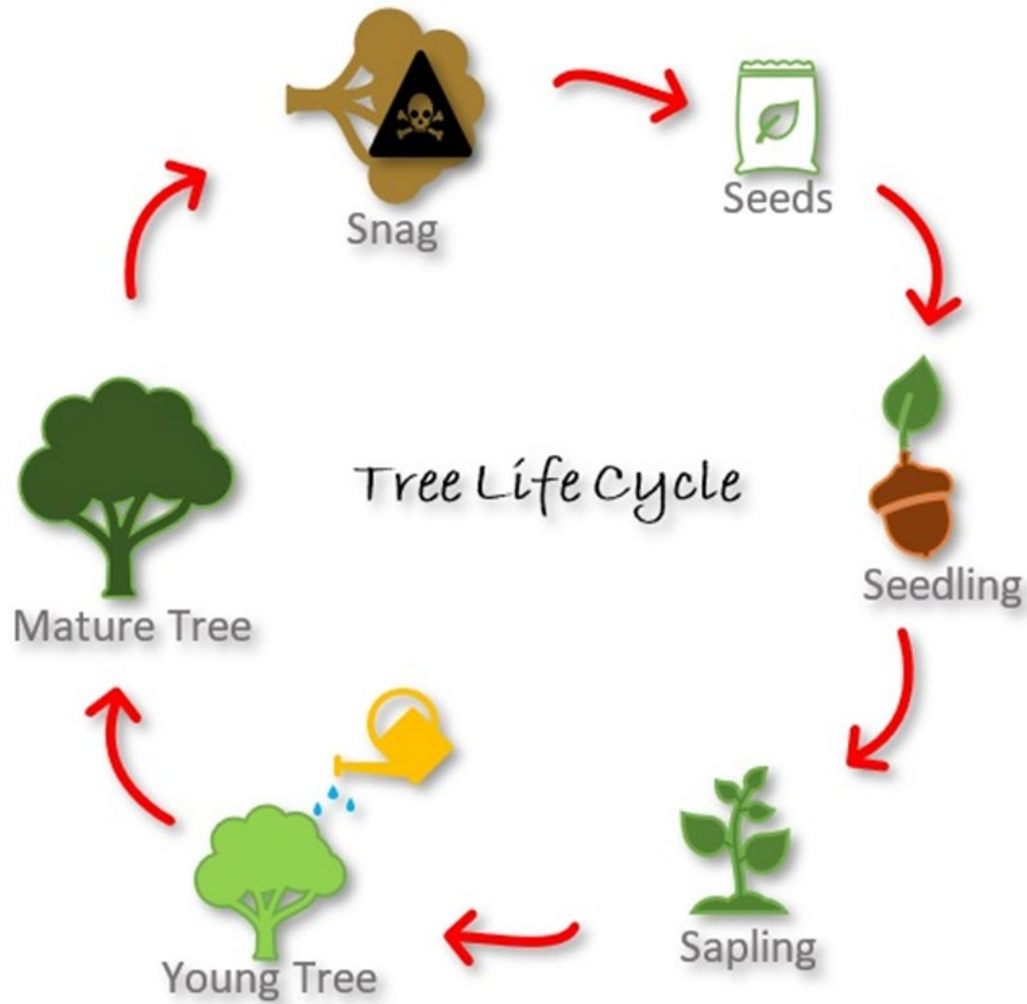
# Clown fish and anemones....



# Firstly, we need all of these at very least..... !



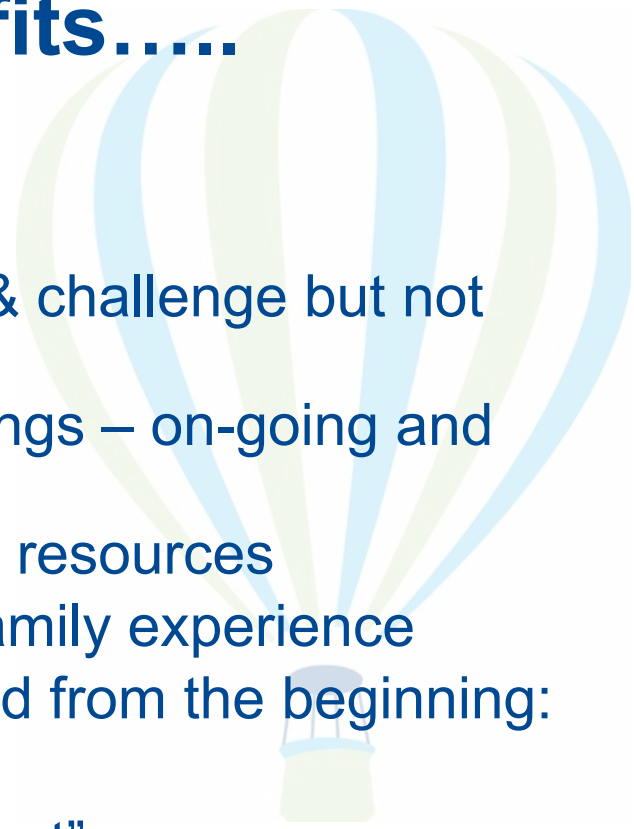
# Secondly, it takes time.....



# Some of the mutual benefits.....



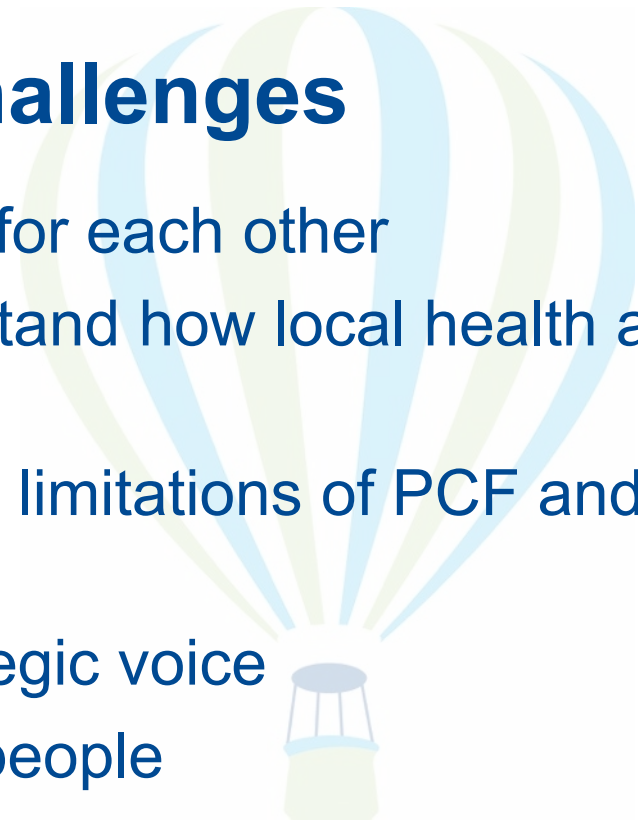
1. Clarity of purpose – representation & challenge but not campaigning
2. Scheduled “working together” meetings – on-going and emerging issues
3. Additional core funding and “in kind” resources
4. Parent carer survey – evidence of family experience
5. Coproduction - commissioned to lead from the beginning:
  - “Keyworker Team”
  - “Neurodiversity Transformation Project”
  - “Autism in Schools”
  - “Peer & Professional Workshops”
  - “Needs led” training
6. Essentially helping PCF build into a professional organisation





# Overcoming inevitable challenges

- Make dedicated and regular time for each other
- PCF needs to take time to understand how local health and care system works
- ICB needs to understand role and limitations of PCF and nurture development
- PCF needs to have a strong strategic voice
- Ensure connecting with the right people
- Recognise the power of putting on an event bringing commissioners, stakeholders and families together – really helps improve communication and breakdown perceived barriers





# Healthier Together

Improving health and care in Bristol,  
North Somerset and South Gloucestershire

