

Parent Carer Participation

Regional Adviser & Management Team

contact *For families
with disabled children*



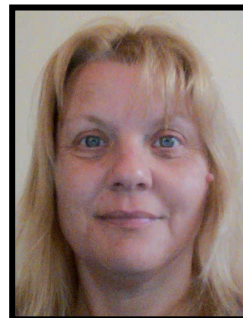
Lisa Aldred

Parent Carer Participation Adviser

Yorkshire and Humber (Bradford, Calderdale, East Riding of Yorkshire, Hull, Kirklees, Leeds, North Yorkshire, Wakefield, York).
North West (all except Wigan) and *Cumbria*

lisa.aldred@contact.org.uk

07421 451678



Cindy Baylis

Parent Carer Participation Adviser

East Midlands and West Midlands, Yorkshire and the Humber
(Barnsley, Doncaster, North East Lincolnshire, North Lincolnshire, Rotherham, Sheffield and Wigan)

cindy.baylis@contact.org.uk

07920 655079



Sue Mennear

Parent Carer Participation Adviser

South West (covering Dorset, Gloucestershire, N Somerset, South Gloucestershire, Swindon, Plymouth, Wiltshire) & *South East*
(Buckinghamshire, Hampshire, Portsmouth, Reading, Southampton & Wokingham) and *London* (covering forums in North West London)

sue.mennear@contact.org.uk

07920 655056



Olivia Newbolt

Parent Carer Participation Adviser

East of England and South East (Bracknell Forest, Brighton and Hove, East Sussex, Isle of Wight, Kent, Medway, Milton Keynes, Oxfordshire, Slough, Surrey, West Sussex, West Berkshire) Rotherham, Sheffield and Wigan)

olivia.newbolt@contact.org.uk



Sarah Lee

**Operations Lead and
Parent Carer Participation
Adviser**

North East

sarah.lee@contact.org.uk



Kate Lovelace-Collins

**Operations Lead and Parent
Carer Participation Adviser**

*(Bath and North East Somerset,
Bournemouth, Christchurch and Poole,
Cornwall, Devon, Somerset, Torbay, Isles
of Scilly)*

kate.lovelace-collins@contact.org.uk

07458 045694



Heather Tarbuck

**Parent Carer Participation
Adviser**

*London North East, London South
and Bristol*

heather.tarbuck@contact.org.uk

020 7326 4522

07920 655165

Parent Carer Participation

Management and Support Team



Gail Walshe
**Director of Participation and
Regional Development**
gail.walshe@contact.org.uk
01296 713138/07817 317371



Carolyn Deveney
**Head of Parent Carer
Participation**
carolyn.deveney@contact.org.uk
07905 917066



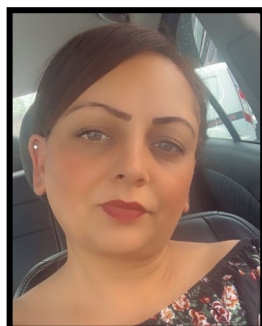
Amanda Elliot
Strategic Health Lead
Amanda.elliott@contact.org.uk
0794 1964590



Ben Bennett
Grants Manager
ben.bennett@contact.org.uk
07421 450545



Jaime Dowling
Grants Co-ordinator
jaime.dowling@contact.org.uk



Anapal Rehal
Programme Administrator
anapal.rehal@contact.org.uk
07421 450581



Helen Reid
Programme Officer
helen.reid@contact.org.uk
07738 895007

Registered Charity No. 284912
Charity registered in Scotland
No. SC039169 Company limited
by guarantee, registered in
England and Wales No. 1633333
VAT Registration Number
GB 749 3846 82