

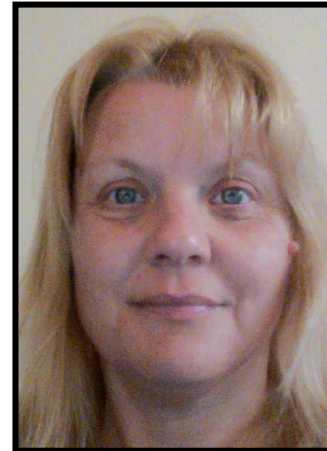
Parent Carer Participation

Regional Adviser & Management Team

contact *For families
with disabled children*



Lisa Aldred
Parent Carer Participation Adviser
Yorkshire and Humber (Bradford, Calderdale, East Riding of Yorkshire, Hull, Kirklees, Leeds, North Yorkshire, Wakefield, York). North West (all except Wigan) and Cumbria
lisa.aldred@contact.org.uk
07421 451678



Cindy Baylis
Parent Carer Participation Adviser
East Midlands and West Midlands, Yorkshire and the Humber (Barnsley, Doncaster, North East Lincolnshire, North Lincolnshire, Rotherham, Sheffield and Wigan)
cindy.baylis@contact.org.uk
07920 655079



Sarah Lee
Operations Lead and Parent Carer Participation Adviser
North East
sarah.lee@contact.org.uk
07920 654967



Laura Burling
Interim Operations Lead and Parent Carer Participation Adviser
(Bath and North East Somerset, Bournemouth, Christchurch and Poole, Cornwall, Devon, Somerset, Torbay, Isles of Scilly)
laura.burling@contact.org.uk
07808 774233

Parent Carer Participation

Regional Adviser & Management Team

contact *For families
with disabled children*



Sue Mennear
Parent Carer Participation Adviser

South West (covering Dorset, Gloucestershire, N Somerset, South Gloucestershire, Swindon, Plymouth, Wiltshire) & *South East* (Buckinghamshire, Hampshire, Portsmouth, Reading, Southampton & Wokingham) and *London* (covering forums in North West London)
sue.mennear@contact.org.uk
07920 655056



Olivia Newbolt
Parent Carer Participation Adviser

East of England and South East (Bracknell Forest, Brighton and Hove, East Sussex, Isle of Wight, Kent, Medway, Milton Keynes, Oxfordshire, Slough, Surrey, West Sussex, West Berkshire)
olivia.newbolt@contact.org.uk
07579 852056



Heather Tarbuck
Parent Carer Participation Adviser

*London North East, London South
and Bristol*
heather.tarbuck@contact.org.uk
020 73264522/07920 655165

Parent Carer Participation

Management and Support Team



Carolyn Deveney
Assistant Director of Parent Engagement
carolyn.deveney@contact.org.uk
07905 917066



Kate Lovelace-Collins
Head of Parent Carer Participation
kate.lovelace-collins@contact.org.uk
07458 045694



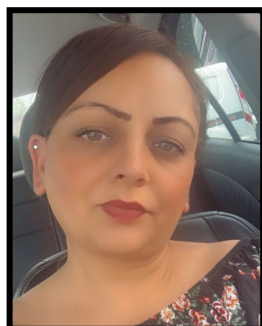
Amanda Elliot
Strategic Health Lead
Amanda.elliott@contact.org.uk
0794 1964590



Ben Bennett
Grants Manager
ben.bennett@contact.org.uk
07421 450545



Jaime Dowling
Grants Co-ordinator
jaime.dowling@contact.org.uk



Anapal Rehal
Programme Administrator
anapal.rehal@contact.org.uk
07421 450581



Helen Reid
Programme Officer
helen.reid@contact.org.uk
07738 895007

Registered Charity No. 284912
Charity registered in Scotland
No. SC039169 Company limited
by guarantee, registered in
England and Wales No. 1633333
VAT Registration Number
GB 749 3846 82