

# Welcome to the NNPCF and Contact virtual Participation Conference 2024



National Network of Parent Carer Forums  
'Our Strength is our Shared Experience'  
[www.nnpcf.org.uk](http://www.nnpcf.org.uk)



# Housekeeping

- Please stay muted if you are not speaking as this cuts down on any background noise
- The session will be recorded, and participants maybe using AI note taker or recording tools.
- Use the chat, raise your hand and/or use unmute to ask us a question.

Thank you for joining us today



# Agenda

- 10:00 – 11:30 NNPCF AGM & NNPCF and Contact planning for the year ahead.
- 13:00 – 14:00 Change Programme Partnership - Alasdair Duerden, Head of SEND and AP Local Implementation Unit.
- 15:00 – 16:00 Dingley's Promise Support SEND children with Catherine McLeod MBE, Chief Executive. Starting with a video message from the Minister for Early Education, Stephen Morgan.
- 19:30 – 21:00 NNPCF Drop in



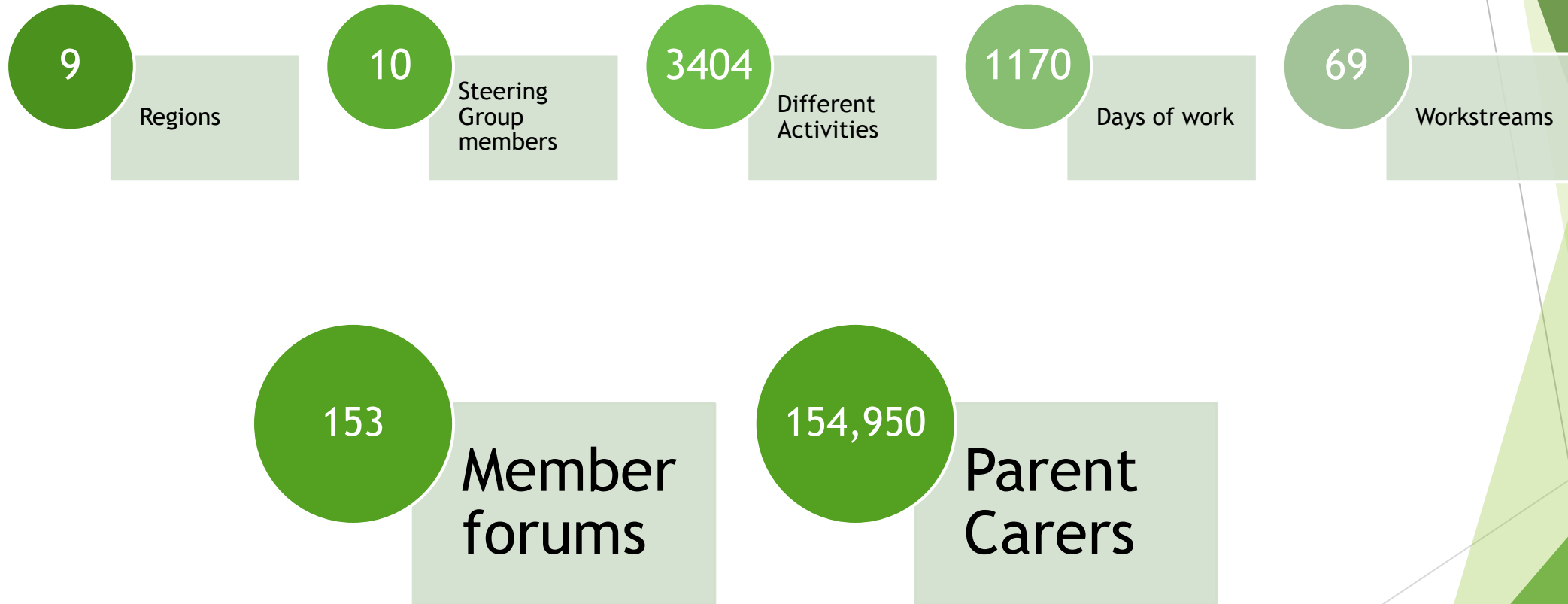
# NNPCF AGM

for the financial year 2023-24

## Key Developments of 2023-24:

- **Government Engagement:** Early meetings with new Minister for Children's and Families, David Johnston OBE, and Permanent Secretary Susan Acland-Hood, advocating for SEND system improvements.
- **Change Programme Partnership (CPP):** Launched in September 2024, testing long-term changes to the SEND system with 32 local authorities and their Parent Carer Forums.
- **Family Voice at Local Level:** Parent Carer Forums play a crucial role in all areas of work, locally, regionally and nationally.
- **Inspections & Feedback:** Continued engagement with Ofsted and CQC to improve inspection processes, with regular feedback from Parent Carer Forums.
- Continued **meetings with key stakeholders**, including Department for Education, Ofsted, and CQC, to ensure parent carer perspectives are central to SEND reform.

# The NNPCF in numbers



# Finance and Operations Update

## Enhanced Financial Management

- Reviewed reserves and diversified across 3 banks with dual signatories and competitive interest rates.

## Internal Structure Redesign

- Conducted consultations with employees and regional members.
- Rebranded back office as **Operational Support Team** to reflect responsibilities.

## Systems Refresh

- Updated time tracking and accounting systems for better income/spend tracking across projects.

## IT Infrastructure and Security

- Completed IT review and established a support contract.
- Launched improvement program to enhance data security and system safety.

# Finances

- ▶ Finances - for the 12 months to 31 March 2024
  - ▶ Income £256,000 - mostly from two large participation contracts from the DfE and NHSE
  - ▶ Wages, NI and pension - £197,511
  - ▶ Other expenses - £69,593 (Face2Face Conference, IT costs, professional fees, travel, accommodation and tax)



# Participation and National Representatives

## Team Growth and New Members

- Expanded to 20 National Representatives with new additions: Dave Barnard, Rachel Hale, Lisa Belton, Rhiannon Walton, Martin McAndrew, Becca Selby
- Farewell and gratitude to departing members Sam Jones, Kay Henry, Louise Engels
- Jo Harrison who was a National Representative was appointed as East of England Steering Group member.

## Key Events and Engagements

- **National Reps Day in London:** Face-to-face sharing, consultations, and communication strategy discussions
- **Major Projects:** Contributions to Early Positive Approaches, National SEND Forum, Mental Health Awards, C(E)TRs, and more
- Focus groups included C(E)TR/DSR, and Disabled Children's Social Care
- Engagement with both PCFs and external parent carers

## Appreciation and Impact

- 370 hours of contributions from the National Rep team
- Sincere thanks for their hard work, insights, and dedication

# North West Region

- System Change Navigation:** Forums adapting to ongoing system changes and addressing community frustrations with services.

- Cluster Model:** Transition to ICB-based clusters in Greater Manchester, Cheshire & Mersey, and Lancashire. Special thanks to Andrea, Christina, and Jean for supporting clusters with limited resources.

- Challenges & Response:** Local SEND inspections lower than expected, leading to new relationships and approaches for forums. Focus on supporting staff mental well-being and trauma awareness.

- Sensory Project:** Successful co-production at strategic and individual levels, building partnerships for better outcomes.

- Health & Underserved Communities:** Collaborative work on projects supporting travelling communities, refugees, and parents with complex needs, in partnership with Alder Hey, Edge Hill, and Contact.



Martin McAndrew



Kath Bromfield

# East Midlands

- ▶ **Leadership Changes:** New Chair, Robert M (Leicestershire SEND Hub), and Vice Chair, Sue M (Rutland Parent Carer Voice), leading regional network improvements.
- ▶ **Inspection Results:** Rutland received the highest SEND inspection outcome; varied results in Nottinghamshire and North Northamptonshire, highlighting areas for improvement.
- ▶ **Regional Collaboration:** Launch of the Dynamic Support Pathway and Key Worker Project with Local Authorities, Health, and Social Care to support SEND children and young people.
- ▶ **New Initiatives:** Partnership for Inclusion of Neurodiversity in Schools (PINS) and testing reforms in LLR as part of the DfE's SEND reforms.
- ▶ **Optimism for the Future:** New Department for Education and devolved NHS structures driving positive change across the region.



Richard Jaramba

# West Midlands

- ▶ **Regional Leadership:** Face-to-face meeting for the first time since the pandemic, with new interim team: Danny (Sandwell), Debbie (Herefordshire), Heather (Solihull), and Jayne (Telford and Wrekin).
- ▶ **SEND Structure Development:** Work continues on regional structures, with half-termly meetings and plans for an autumn event.
- ▶ **Key Challenges:** Loss of SEND Advisors causing uncertainty, but new relationships with DfE and NHS Midlands forming.
- ▶ **Local Area Inspections:** Telford and Wrekin received the highest inspection outcome, with Sandwell and Stoke-on-Trent following. Ongoing action plans in many areas.
- ▶ **Change Programme:** Telford and Wrekin leading the Change Programme, collaborating with Herefordshire, Shropshire, and Worcestershire on SEND and AP reforms.
- ▶ **Acknowledging PCFs:** Recognition of the tireless work of Parent Carer Forums (PCFs) across the region, continuing to drive improvement.



Elaine Lambe

# East of England

- **Leadership Changes:** New Chair Sarah Conboy, Vice Chair Julia Brunning, and new regional representatives, including Lisa Belton and Olivia Newbolt.
- **Health Collaboration:** Co-produced "Principles of Good Practice" with NHS funding, strengthening regional voice and securing continued funding for 2024/25.
- **Regional Engagement:** Active participation in SEND forums and “courageous conversations” in Norfolk and Essex; co-produced Local Authority Guidance on Online Assessments.
- **Forum Support:** Overcame challenges with local authority and ICB turnover; hosted an IPSEA training day for 34 parent representatives.
- **Royal Visit:** Surprising visit from Her Majesty the Queen, where regional parent carers showcased their work.



Jo Harrison

# London Region

In London we operate on a Three Cluster model with termly meetings for each cluster and several opportunities to meet as a region across the year. In addition, we offer regular information and networking events, examples include:

- **Annual SEND Law Update with SOS!SEN:** Every year we invite SOS!SEN to meet with London Forums and update on legal changes affecting families with SEND.
- **Supported Internships:** The London Region supported parent carer participation in the NDTi 'Internships Work' programme. We hosted regular engagement events with the NDTi regional lead and London Forums.
- **Local Area SEND Inspections:** We created a webinar and resource pack to help Forums prepare for the OFSTED/CQC inspection in their Local Area. We offer support to regional PCFs as they go through the inspection process.
- **Our regular strategic engagement with regional stakeholders includes:**
  - NHSE London Region Quality Improvement and SEND Leads
  - Learning Disability and Autism Partnership Board
  - London Improvement and Innovation Alliance
  - Association of London Directors and Children's Services
  - SEND Strategic Managers and Parent Carer Network



Claire Richmond



Ros Luff

# London Region

## Regional SEND Projects

- **Mayor of London's Violence Reduction Unit:** NNPCF representatives are part of the 'Difference Matters' Advisory Group, helping London secondary schools to create inclusive environments for neurodivergent young people.
- **Working with Research Partner MIME on Inclusion in London Schools:** NNPCF reps supported this research project (commissioned by London Councils) with parent carer focus groups, a survey and direct contributions to the final report.
- **London SEND Leadership Programme:** We co-developed a SEND leadership training course to address regional workforce challenges. The value we've added has encouraged partners from DfE, ALDCS, NHSE, LIA and Newton Nasen to embed and fund parent carer participation in the training offer and delivery of the programme.
- **Working in Co-production with Health Partners:** The region have worked hard this year to develop relationships with health partners in London including:
  - Supporting ICB Partnership Working Events
  - Co-hosting a 'Co-production in SEND' Event with health partners and Parent Carer Forums.
  - Co-developing a commissioning spec for co-production video production.



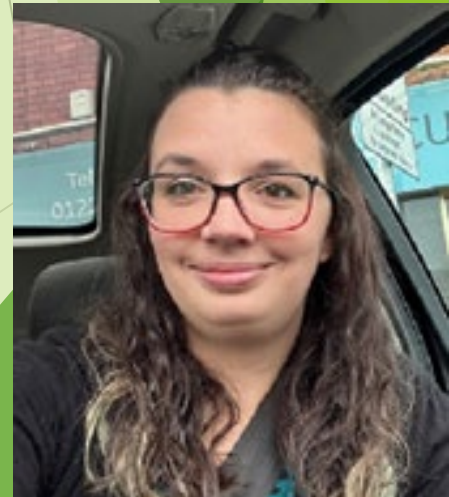
Claire Richmond



Ros Luff

# North East & Cumbria

- **Local Government Restructure:** Cumbria's restructure, along with local area SEND inspections in Hartlepool, Gateshead, and Middlesbrough.
- **Partnership Conference:** Successfully organized in Leeds with NHS Region, sharing good practice and coproduction with local authorities and health professionals.
- **National Conference:** Hosted Contact/NNPCF National Conference in Newcastle, bringing together forums and showcasing regional commitment.
- **Regional Focus:** Half-termly meetings fostering collaboration across forums, strengthening relationships despite challenges.
- **Challenges:** Local authority restructures in Cumbria and ICB changes impacting workstreams, compounded by the cost-of-living crisis.



Jilly Russell



# South East Region

- **Regional Structure & Leadership:** New Chair, Lisa Scarrott, and updated regional structure introduced last year, enhancing collaboration and support for Parent Carer Forums (PCFs).
- **Engagement Challenges:** Decline in strategic level engagement with Parent Carer Forums under the RISE contract, with efforts underway to improve involvement with RISE leads and DfE partners.
- **NHSE Collaboration:** Increased engagement with NHSE regional colleagues, producing two informative guides:
  - **Demystifying the NHS:** Overview of NHS structure, ICSs, ICBs, and services for SEND children.
  - **Working with a Parent Carer Forum:** Practical advice for NHS professionals on engaging with PCFs.
- **Regional Conference:** Successful South East PCF regional conference in June 2023, with presentations on Self Evaluation Forms (SEF) from regional DfE SEND Advisors.
- **Gratitude & Acknowledgements:** Thanks to all South East PCFs, Contact advisors, and regional support team for their ongoing dedication and contributions.



Sarah Clarke

# South West Region

- **Growth of the Region:** From minimal regional structure in 2017 to nearly all forums receiving additional health funding, marking significant progress.
- **NHSE Collaboration:** Ongoing co-production with NHSE SW, with £80,000 allocated to 3 forums for the "Waiting Well" initiative to address gaps in child and young person journeys.
- **Key Projects:**
  - **Transitions Work:** Case studies and recommendations to improve transitions, culminating in a collaborative event in Taunton.
  - **Health Passport:** Co-production event held in Taunton, for development of a regional health passport for SEND children.
  - **Admission Avoidance Booklets:** Over 16,000 views and growing, providing valuable resources for families and professionals.
  - **Autism in Schools:** Year 3 of the program, with over 100 schools trained, benefiting thousands of families across the region.



Kenton Mee



Tina Emery

# Yorkshire & Humber

## •Key Achievements:

- **ICB Engagement:** 3 out of 14 PCFs actively working with Integrated Care Boards (ICBs), leading to a **NE&Y Regional Conference** with 29 areas to identify common priorities and strengthen collaboration.
- **Transport Policy Advocacy:** PCFs raised concerns on inconsistencies in transport policies, leading to NNPCF rep participation in regular regional meetings.

## •Ongoing Regional Contributions:

- Regular feedback and representation in regional SEND meetings (e.g., SEND Leads, Out of School meetings, Home-to-School Transport).
- Active participation in **NEYLDA Better Start in Life** and **CTR/CETR/DSR systems**.

## •National Initiatives:

- **SEND Inspections:** Hull and Wakefield inspected, with PCF feedback informing Ofsted.
- **Partnership for Inclusion of Neurodiversity in Schools (PINS):** Selected areas (Wakefield, Bradford, Leeds, Calderdale) are testing SEND AP reforms under the Change Programme Partnership (CPP)



Jayne Fitzgerald

# We cannot do it without you!

- ✓ Parent Carer Engagement
- ✓ Peer support
- ✓ Signposting parent carers (and professionals!!!) to services
- ✓ Raising parent carer feedback to stakeholders
- ✓ Champion the parent carer lived experience across their local systems and beyond
- ✓ Encouraging local co-production and participation

**Thank You from the NNPCF Team**



## NNPCF & Contact - The Year Ahead

- ❖ New Government.
- ❖ Participation Contract - rollover and beyond.
- ❖ Joint NNPCF/Contact survey coming soon
  - What PCFs want and need to inform the retender of the Participation Contract.
- ❖ 4th February 2025 Conference - Northampton.
- ❖ Law Commission
  - NNPCF 9th January session for parent carers.
- ❖ Handbook update and Contact's offer to PCFs

# contact

*For families  
with disabled children*



National Network of Parent Carer Forums

'Our Strength Is Our Shared Experience'

## Questions & Comments

### Sessions to follow:

- 1-2pm - CPP - Alasdair Duerden
- 3-4pm - Minister Stephen Morgan & Catherine McLeod, Dingley's Promise
- 7.30-9pm - NNPCF Drop In with Contact attending 7.30-8pm

### Menti

<https://www.menti.com/>

Code: 3452 2808

