

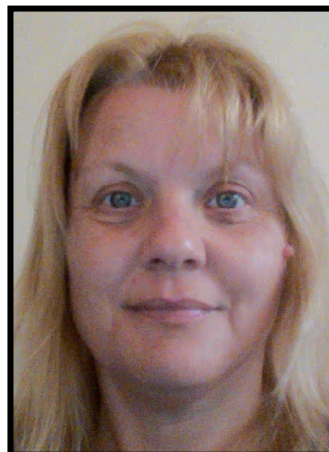
Parent Carer Participation

Regional Adviser & Management Team

contact *For families
with disabled children*



Lisa Aldred
Parent Carer Participation Adviser
Yorkshire and Humber (Bradford, Calderdale, East Riding of Yorkshire, Hull, Kirklees, Leeds, North Yorkshire, Wakefield, York). North West (all except Wigan) and Cumbria
lisa.aldred@contact.org.uk
07421 451678



Cindy Baylis
Parent Carer Participation Adviser
East Midlands and West Midlands, Yorkshire and the Humber (Barnsley, Doncaster, North East Lincolnshire, North Lincolnshire, Rotherham, Sheffield and Wigan)
cindy.baylis@contact.org.uk
07920 655079



Sue Mennear
Parent Carer Participation Adviser
South West (except Bristol) & South East (Buckinghamshire, Hampshire, Portsmouth, Reading, Southampton, Isle of Wight, Surrey, Slough, Oxfordshire and Wokingham)
sue.mennear@contact.org.uk
07920 655056



Heather Tarbuck
Parent Carer Participation Adviser
London North East, London South and South West (Bristol)
heather.tarbuck@contact.org.uk
020 73264522/07920 655165

Parent Carer Participation

Regional Adviser & Management Team

contact *For families
with disabled children*



Laura Burling
**Interim Operations Lead and Parent Carer
Participation Adviser**

*North West London & South East: Brighton and Hove,
East Sussex, Kent, Medway, Milton Keynes and West
Sussex)*

laura.burling@contact.org.uk
07808 774233



Carolyn Deveney
**Assistant Director of Parent
Engagement**

carolyn.deveney@contact.org.uk
07905 917066



Sarah Lee
**Operations Lead and Parent
Carer Participation Adviser**

North East
sarah.lee@contact.org.uk
07920 654967



Olivia Newbolt
**Operations Lead and Parent Carer
Participation Adviser**

*East of England and South East (West
Berkshire, Windsor and Maidenhead and
Bracknell Forest)*

olivia.newbolt@contact.org.uk
07579 852056



Kate Lovelace-Collins
Head of Parent Carer Participation

kate.lovelace-collins@contact.org.uk
07458 045694

Parent Carer Participation

Management and Support Team

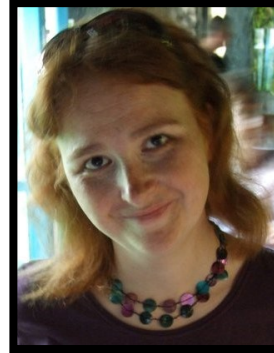


Ben Bennett

Grants Manager

ben.bennett@contact.org.uk

07421 450545



Jaime Dowling

Grants Co-ordinator

jaime.dowling@contact.org.uk

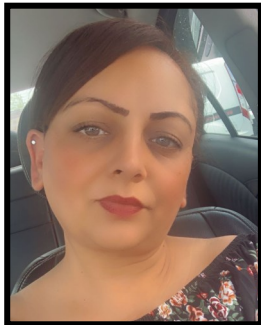


Amanda Elliot

Strategic Health Lead

Amanda.elliott@contact.org.uk

0794 1964590



Anapal Rehal

Programme Administrator

anapal.rehal@contact.org.uk

07421 450581



Helen Reid

Programme Officer

helen.reid@contact.org.uk

07738 895007

Registered Charity No. 284912
Charity registered in Scotland
No. SC039169 Company limited
by guarantee, registered in
England and Wales No. 1633333
VAT Registration Number
GB 749 3846 82